

震災豫防調査會報告第一號附圖(乙)

五條川橋震害圖及改造橋脚圖	貳枚(其二)
天白川橋震害圖	貳枚(其二)
新川橋震害圖及改造橋脚圖	貳枚(其二)
長良川橋震害圖	貳枚(其二)
長良川橋舊橋脚明細圖	貳枚(其二)
長良川橋改造橋脚圖	壹枚
犀川橋震害圖及改造橋脚圖	貳枚(其二)
揖斐川橋震害圖	壹枚
揖斐川橋橋臺及橋脚震害明細圖	貳枚(其二)
二ノ町コルベルト震害圖	壹枚

五條川橋震害及改造橋脚圖

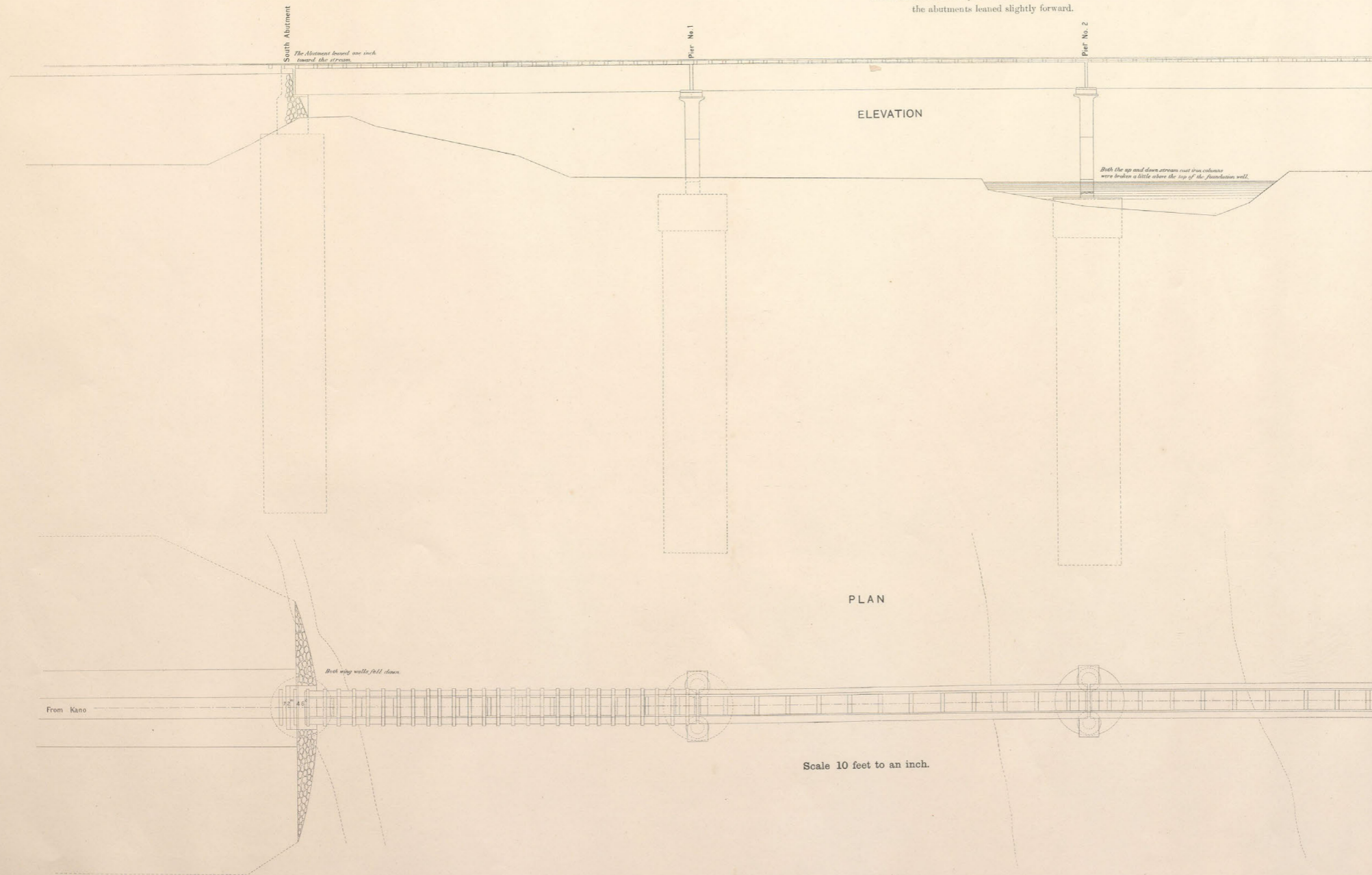
ELEVATION AND PLAN

OF
GOJOGAWA BRIDGE.

Showing the condition after the great earthquake of Oct. 28th, 1891.

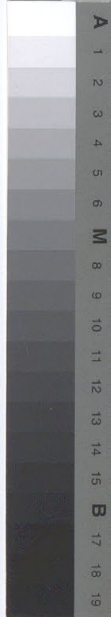
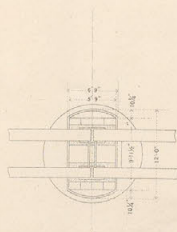
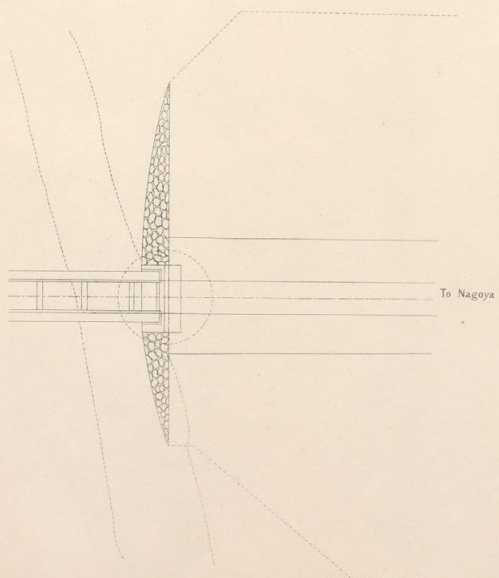
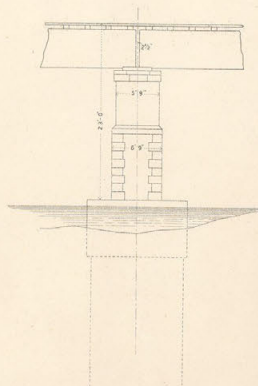
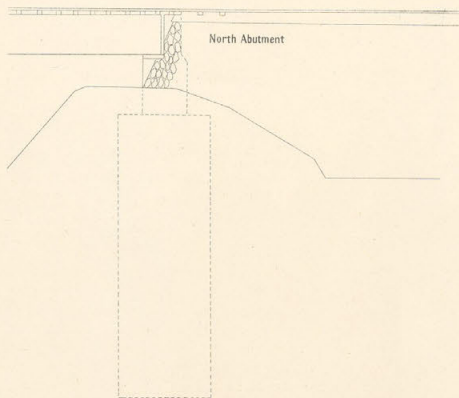
Pier No. 2, consisting of the same pattern as used in Shinkawa Bridge broken at a few feet above the top of the foundation well and one of the abutments leaned slightly forward.

五條川橋震害及改造橋脚圖(其一)



ELEVATION AND PLAN
OF
PIER

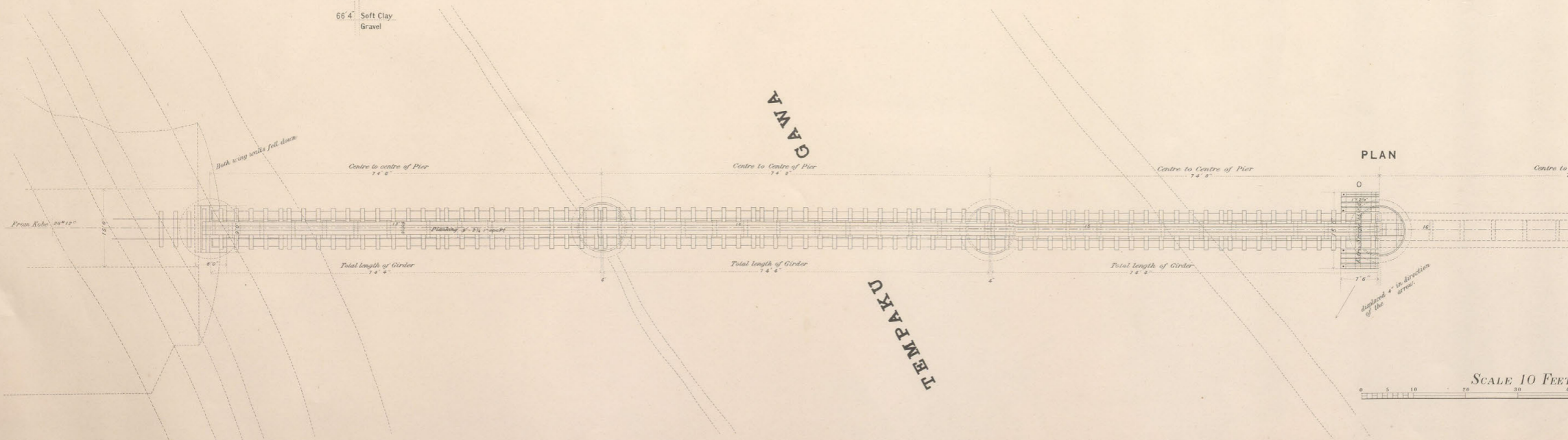
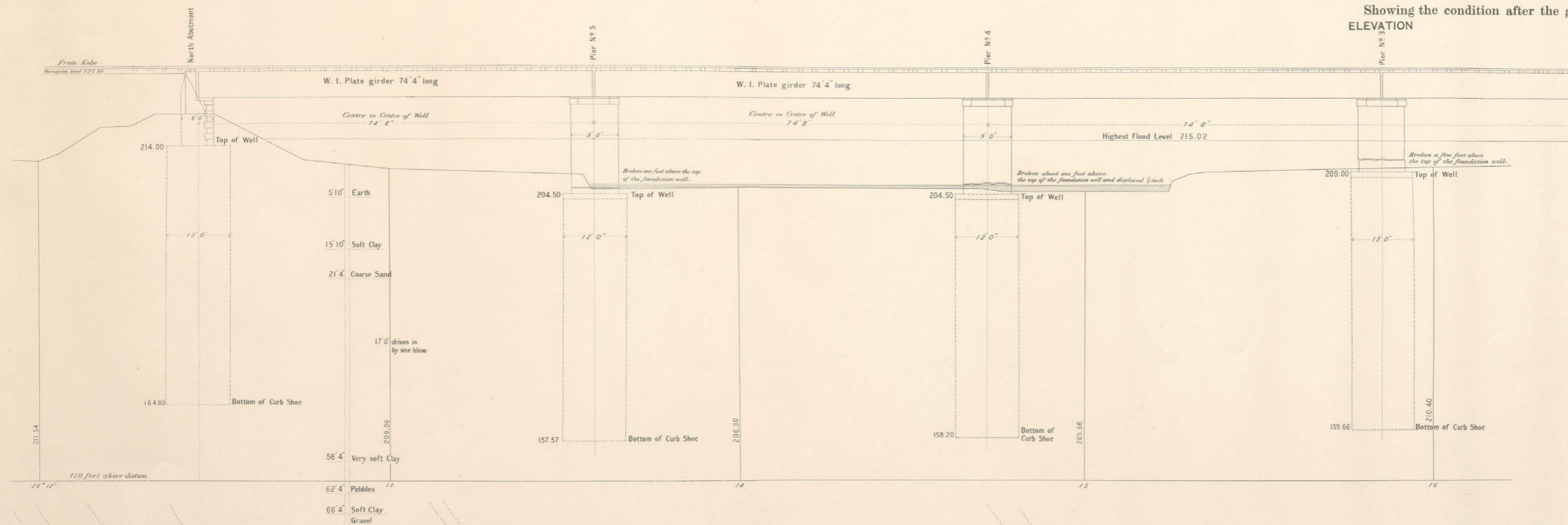
as reconstructed after the Earthquake.



橋震害圖 ELEVATION 0 TEMPAKUGA

天白川橋震害圖(其二)

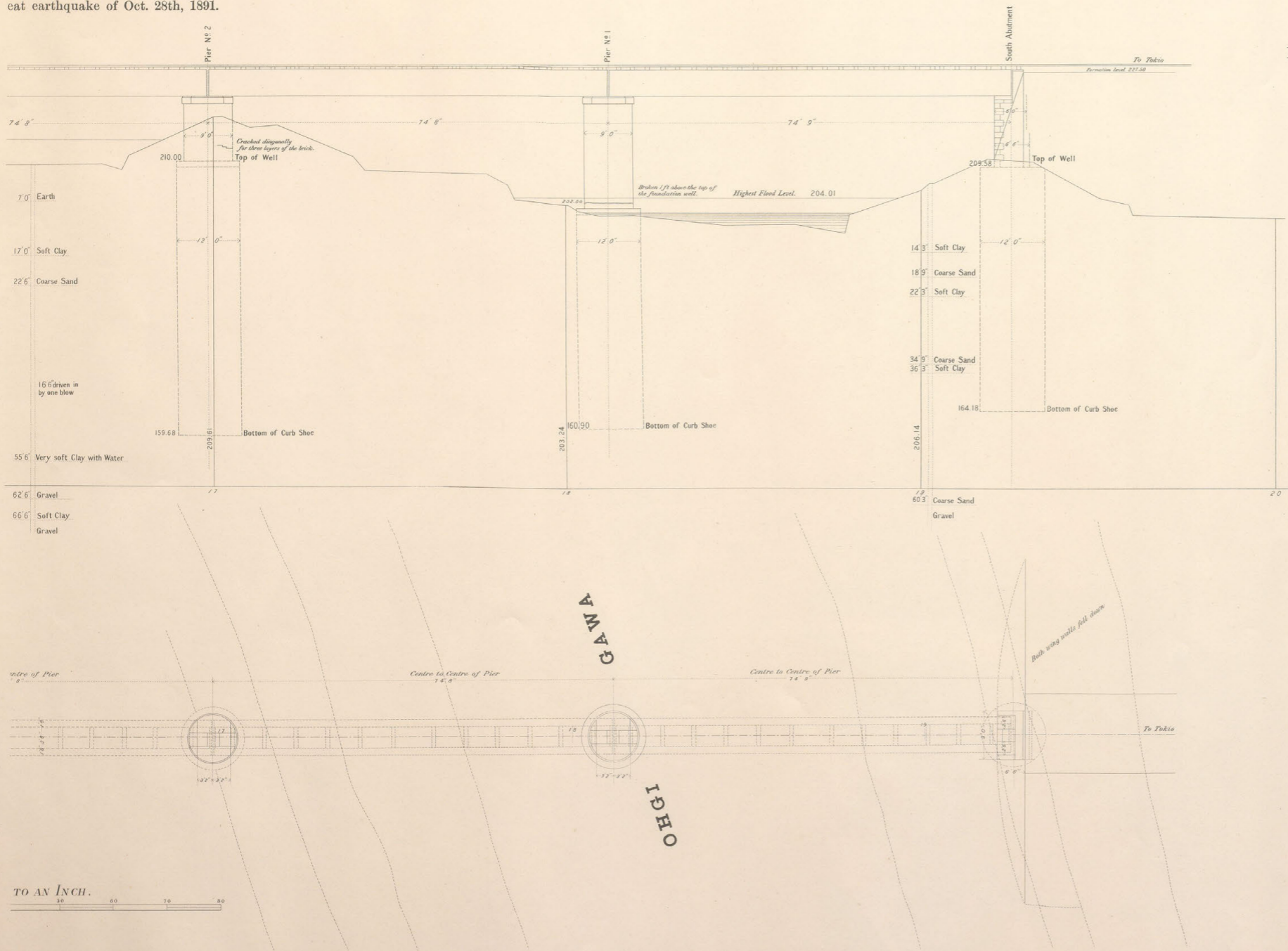
Showing the condition after the gr
ELEVATION



川白天 AND PLAN

F WA BRIDGE.

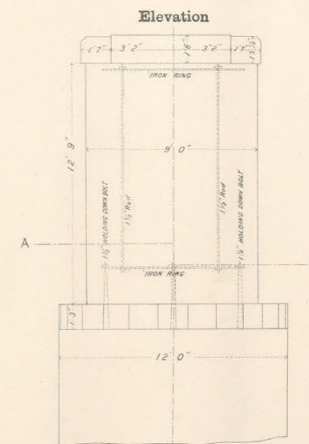
eat earthquake of Oct. 28th, 1891.



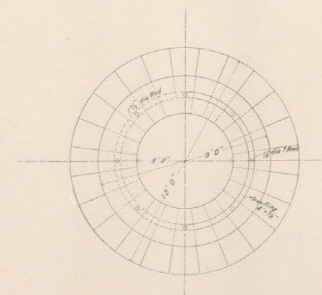
ELEVATION AND SECTIONAL PLAN

OF PIER No. 3

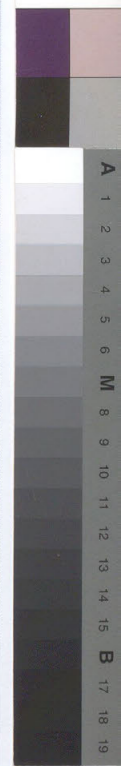
as reconstructed after earthquake damage of Oct. 28th, 1891.



Sectional Plan at AA



Scale 4 ft. = 1 inch.



新川橋震害及改造橋脚圖

ELEVATION AND PLAN

OF

SHINKAWA BRIDGE.

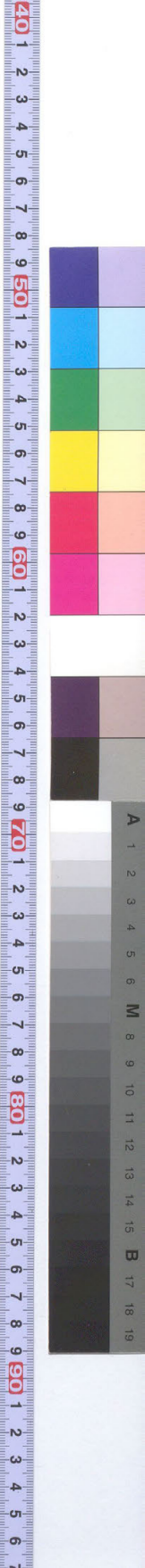
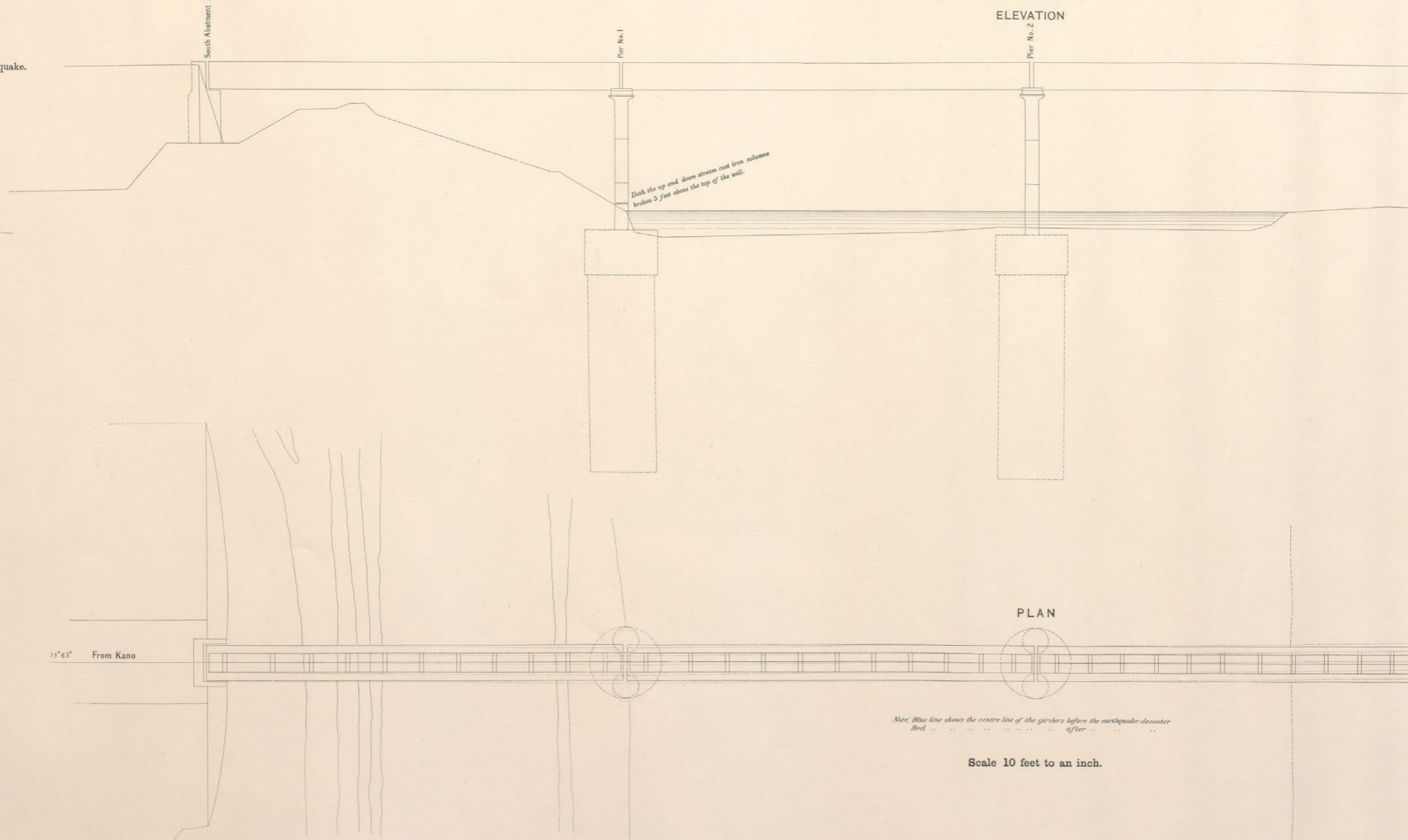
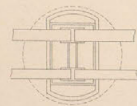
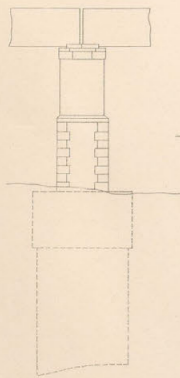
Showing the condition after the great earthquake of Oct. 28th, 1891.

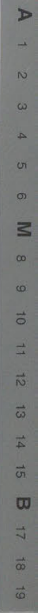
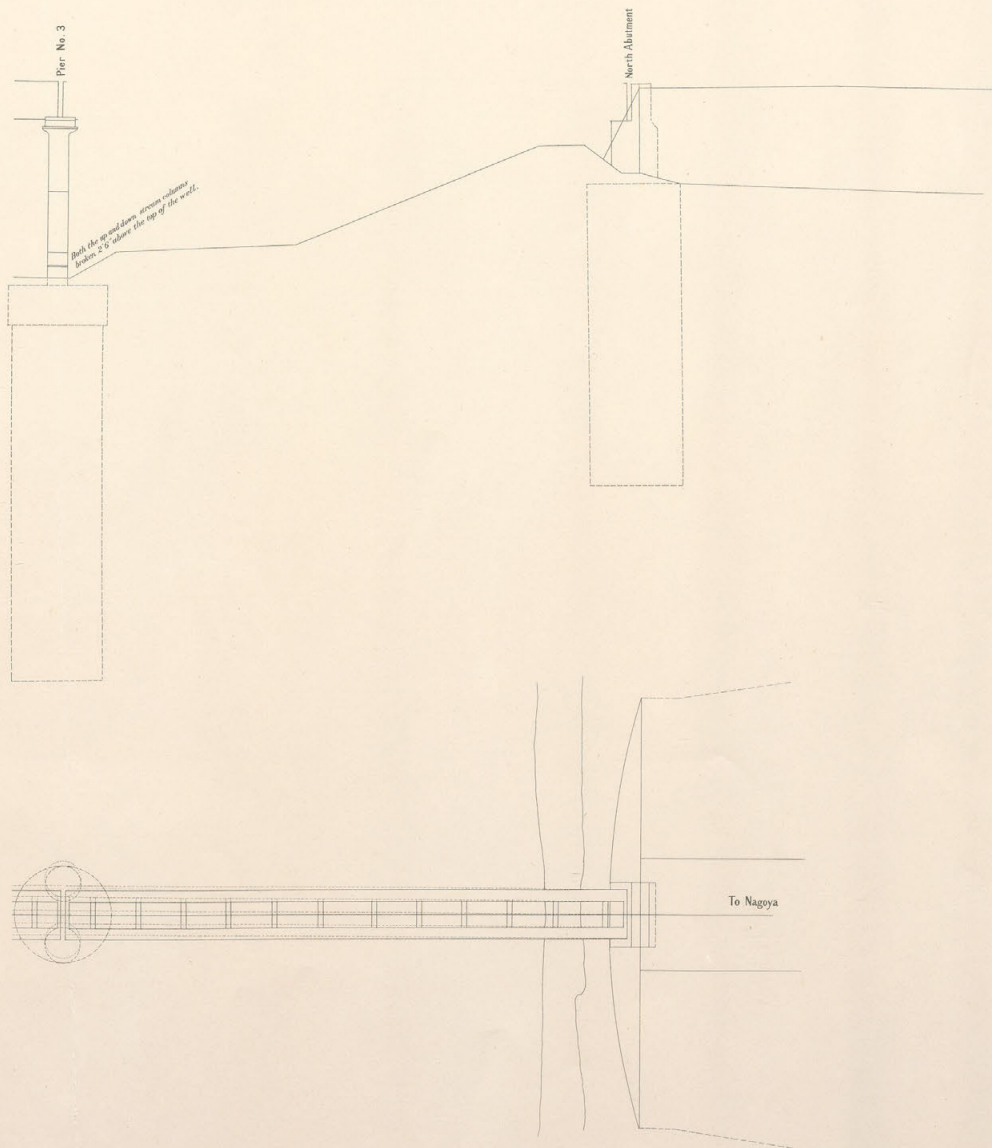
Two piers, each consisting of a pair of cast iron columns, 2'6" in diameter, $\frac{1}{2}$ " thick, filled with concrete, broken at a few feet above top of foundation wells and the bridge twisted as shown.

新川橋震害及改造橋脚圖(其一)

ELEVATION AND PLAN OF PIER

as reconstructed after the earthquake.





長良川橋震害略圖

度 尺
呎拾貳為吋壹以

ELEVATION AND PLAN

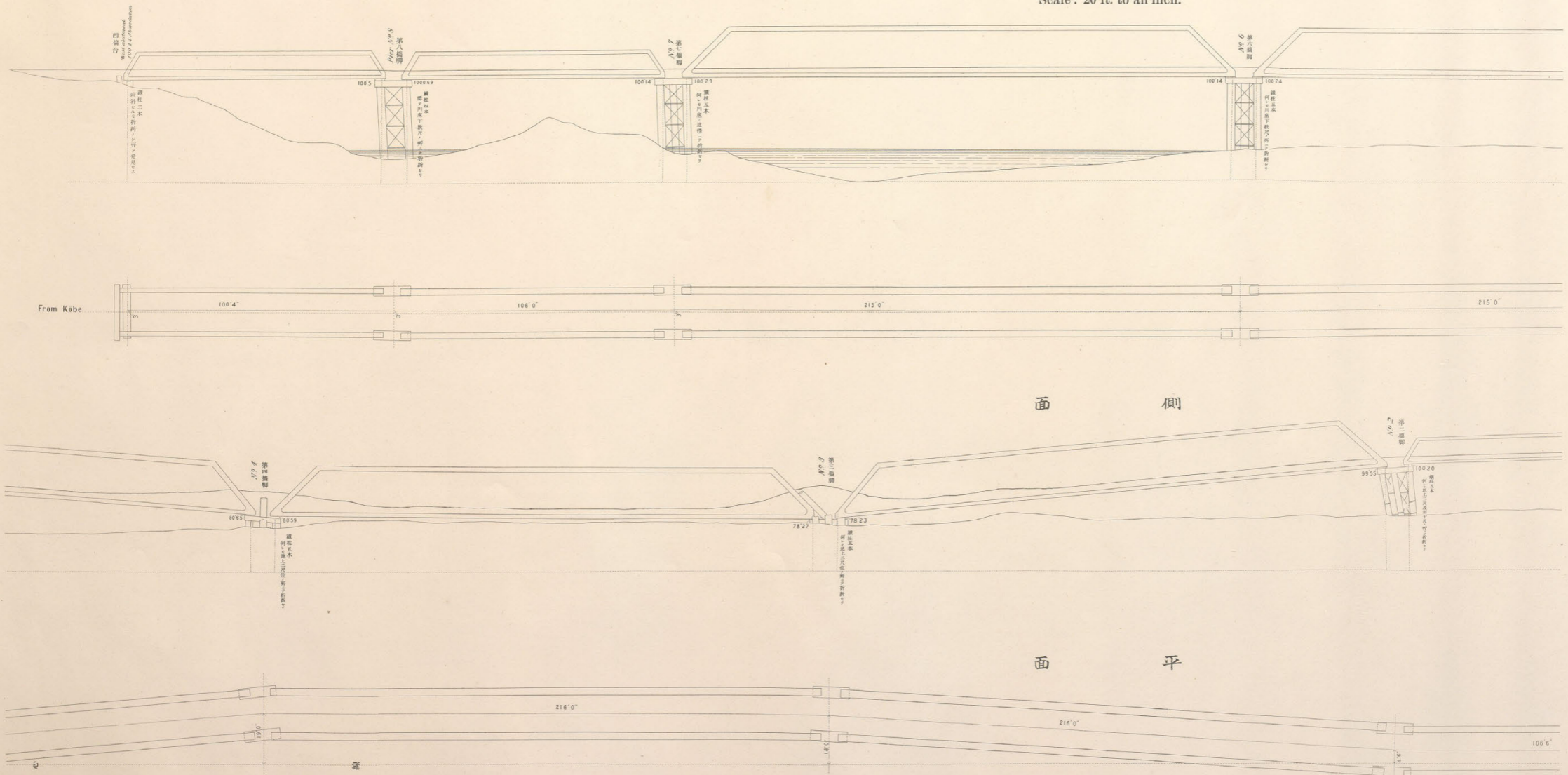
OF

NAGARAGAWA BRIDGE.

Showing the condition after the earthquake disaster of Oct. 28th, 1891.

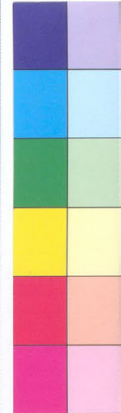
All piers broken and two piers No. 3 and No. 4 entirely failing. The girders fall down as shown.

Scale: 20 ft. to an inch.

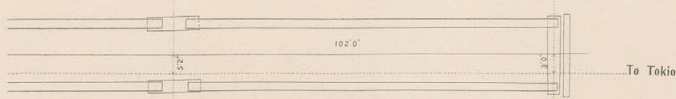
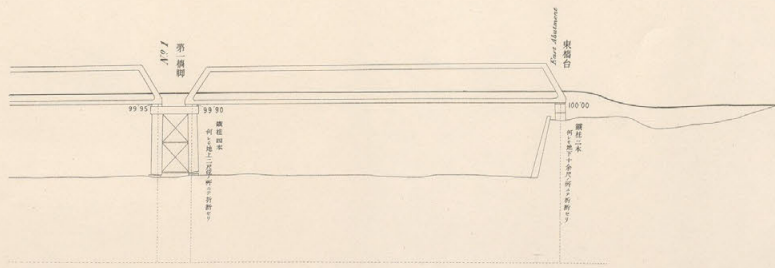
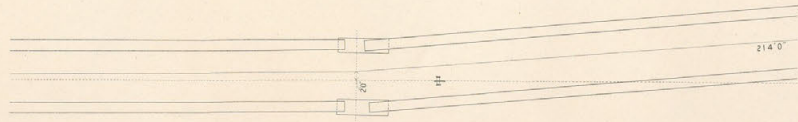
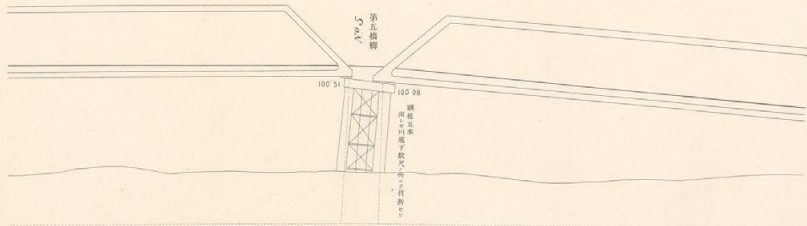


長良川橋震害圖(其二)

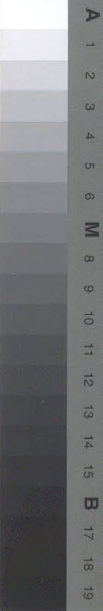
9
40
1
2
3
4
5
6
7
8
9
50
1
2
3
4
5
6
7
8
9
60
1
2
3
4
5
6
7
8
9
70
1
2
3
4
5
6
7
8
9
80
1
2
3
4
5
6
7
8
9
90
1
2
3
4
5
6



A
1
2
3
4
5
6
M
8
9
10
11
12
13
14
15
B
17
18
19

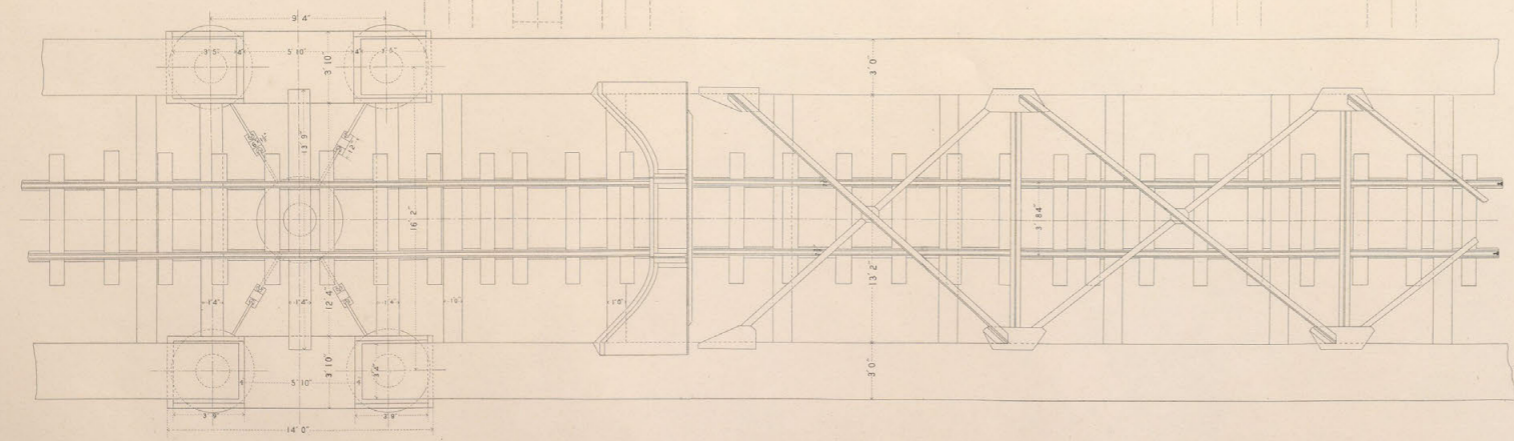
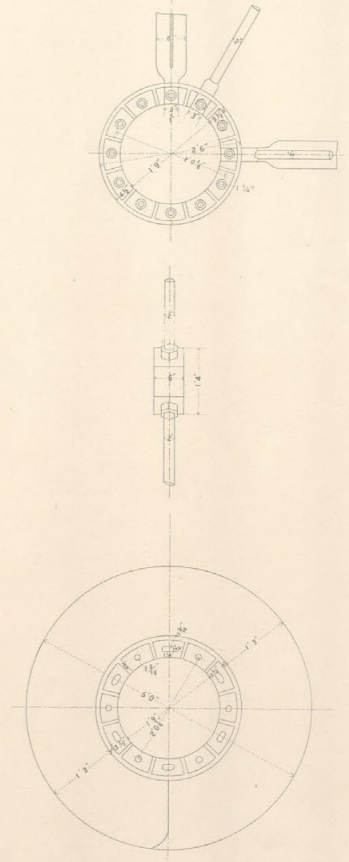
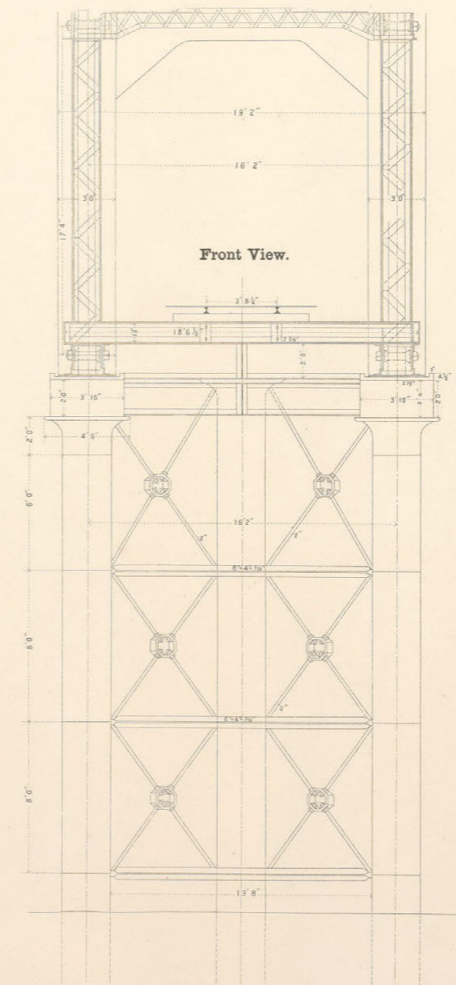
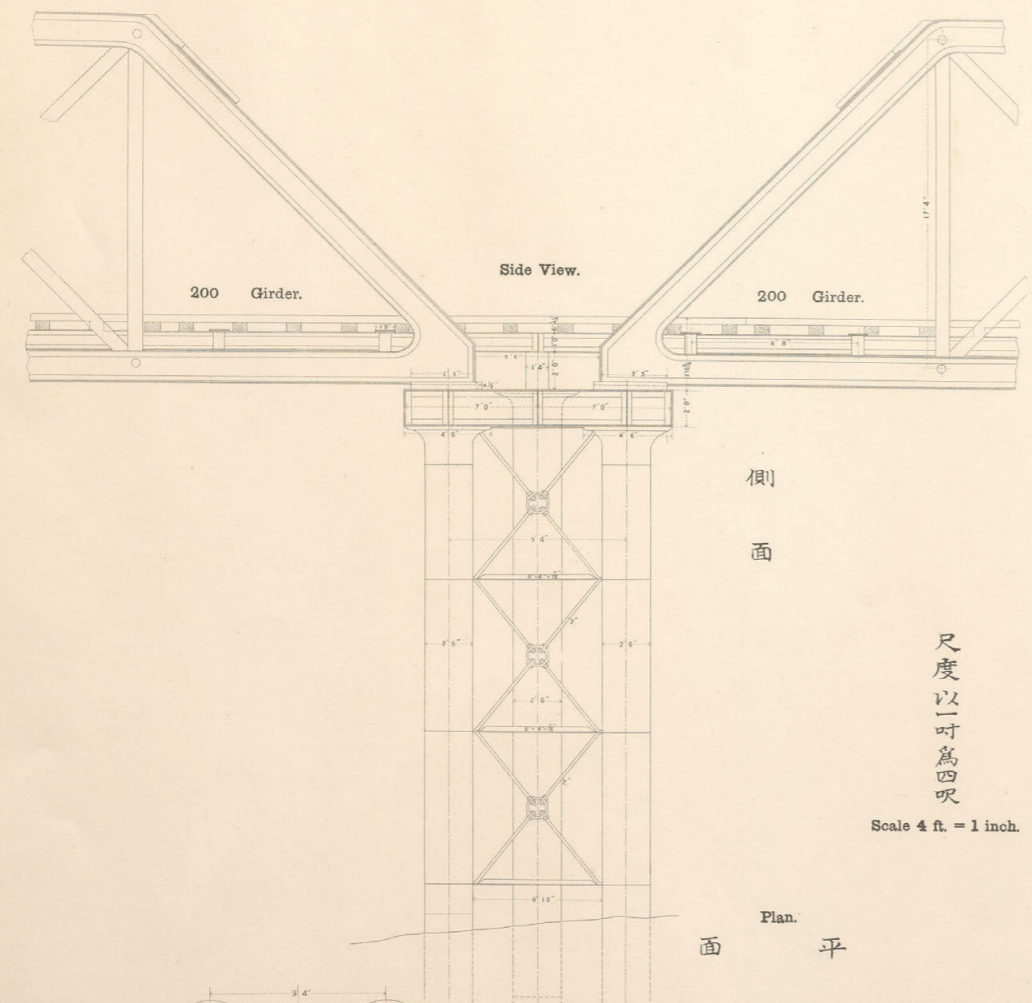


9 40 1 2 3 4 5 6 7 8 9 50 1 2 3 4 5 6 7 8 9 60 1 2 3 4 5 6 7 8 9 70 1 2 3 4 5 6 7 8 9 80 1 2 3 4 5 6 7 8 9 90 1 2 3 4 5 6



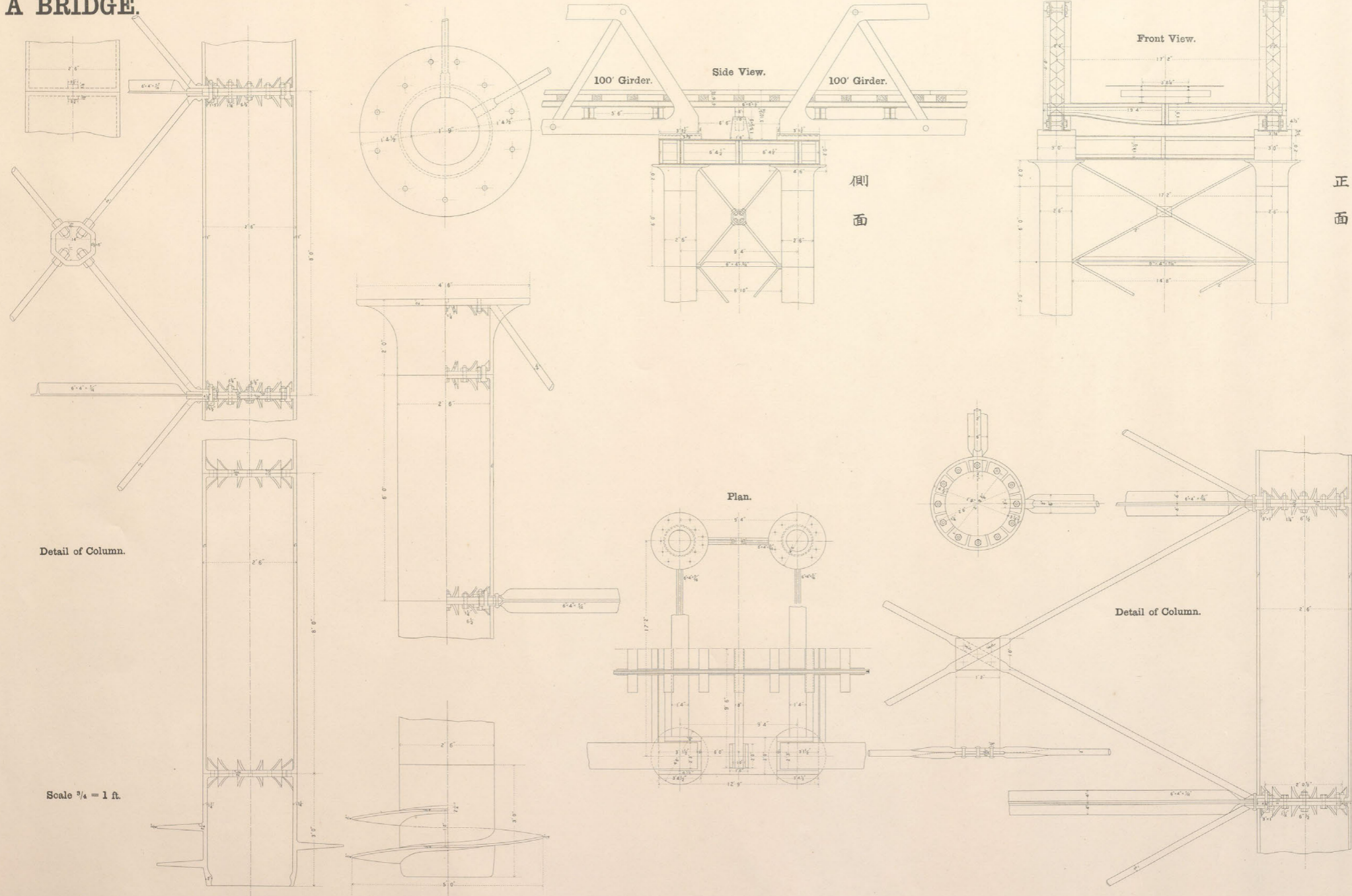
橋脚明細圖
 ORIGINAL DETAIL DRAWING OF
 OF
 NAGARAGAW

長良川橋脚明細圖(其二)



舊橋川良長 CAST IRON SCREW PILE PIER

A BRIDGE.



Detail of Column.

Scale 3/4" = 1 ft.

側面

正面

Plan.

Detail of Column.



長良川橋改造脚橋圖

ELEVATION AND PLAN

OF

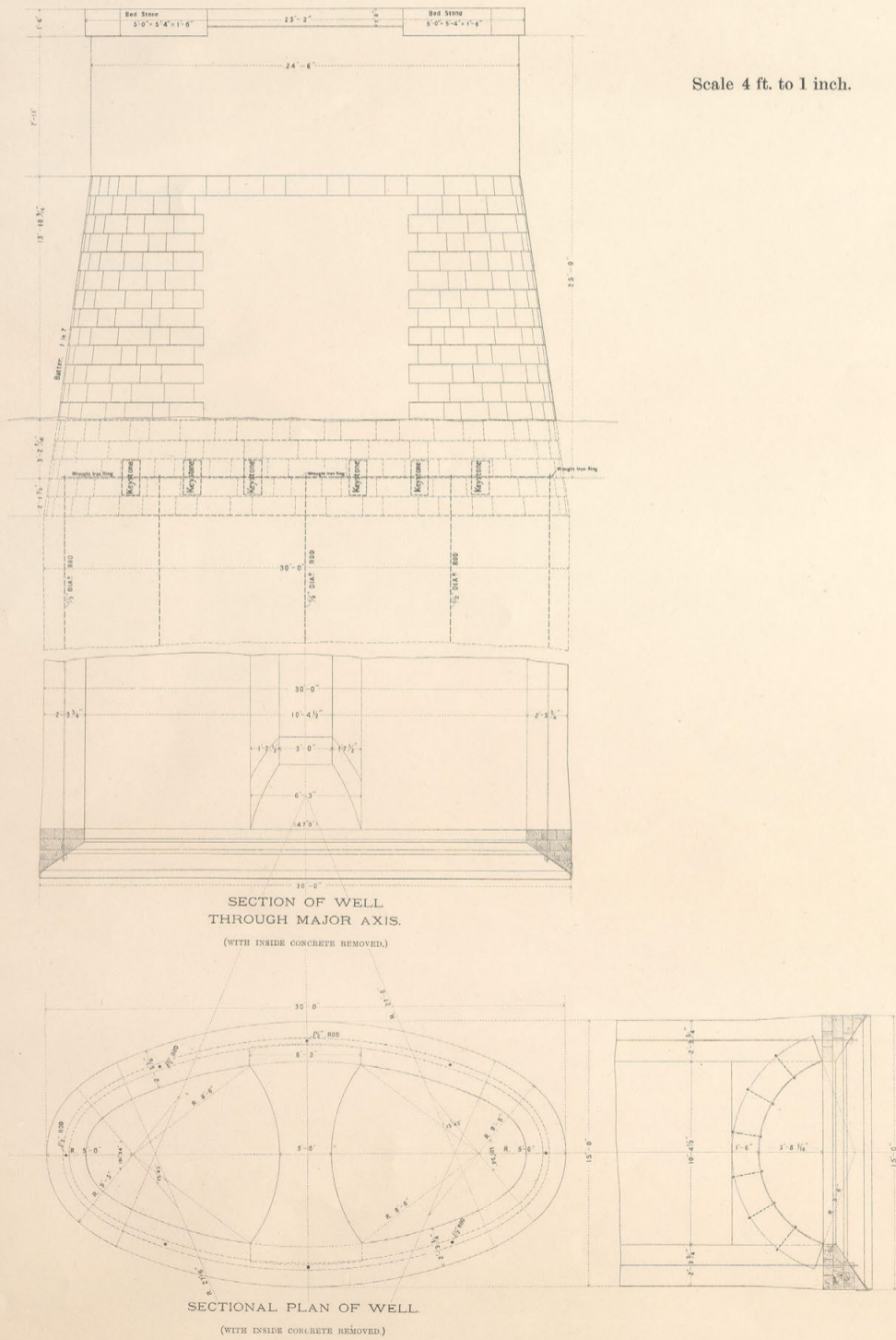
NAGARAGAWA BRIDGE PIERS.

As reconstructed after the earthquake disaster of Oct. 28th, 1891, by using elliptical foundation brick well and building in several keystone at the portion near the ground surface and the structure built up as shown, with object to increase the sectional area of the pier near the river bed, which has been proved to be most likely attacked portion by earthquake.

SIDE VIEW

FOR

PIERS Nos. 4, 5, 6, 7 & 8.

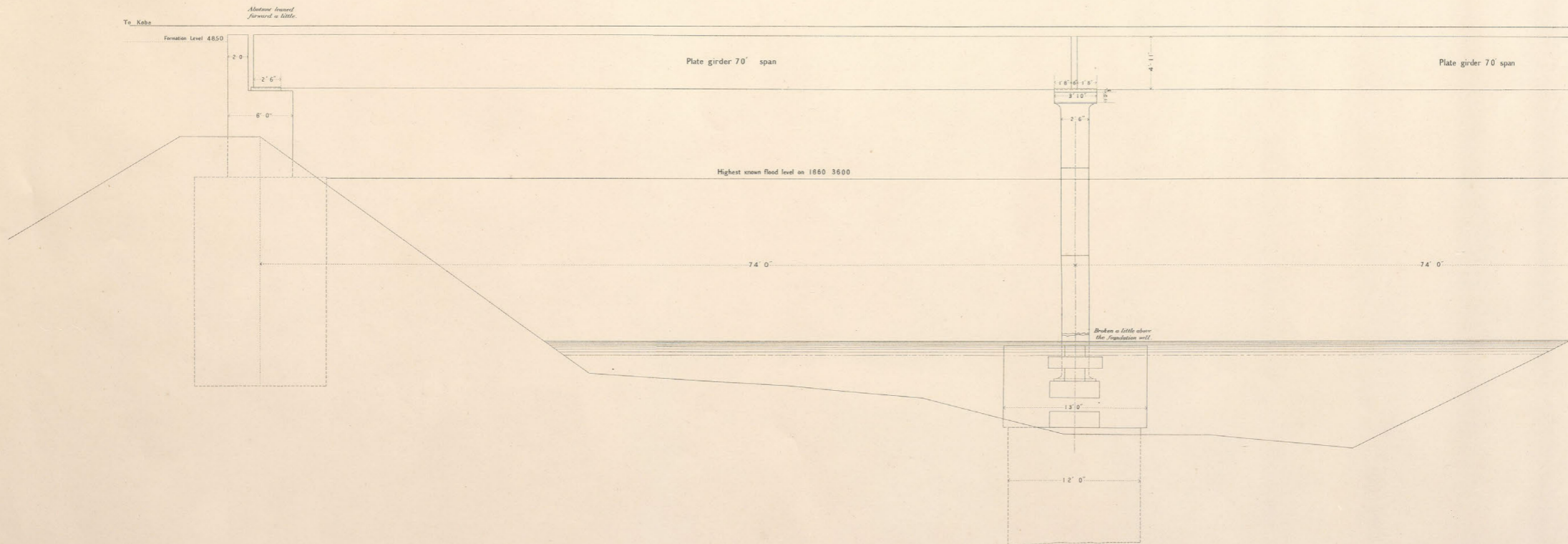


圖脚橋造改及圖害震橋川犀
 ELEVATION OF SAIGAWA BRIDGE.

Showing
 The condition after the earthquake disaster of Oct. 28th, 1891.

Scale 5 ft. = 1 inch.

犀川橋震害圖及改造橋脚圖(其一)

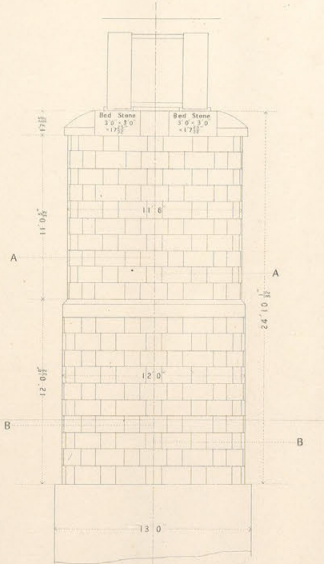


ELEVATION AND PLAN

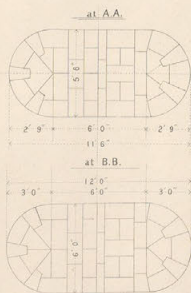
OF PIER

as reconstructed after the Earthquake.

FACE OF PIER



SECTIONAL PLAN



Scale 5 ft. = 1 inch.

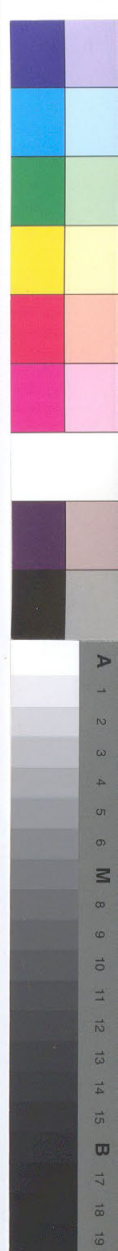
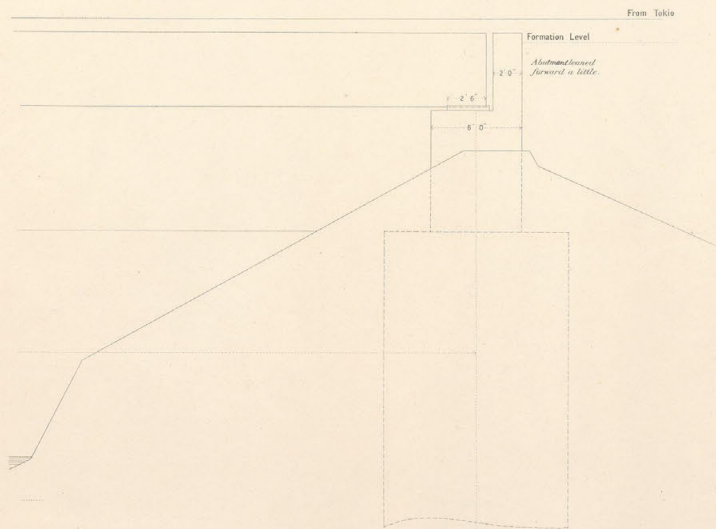
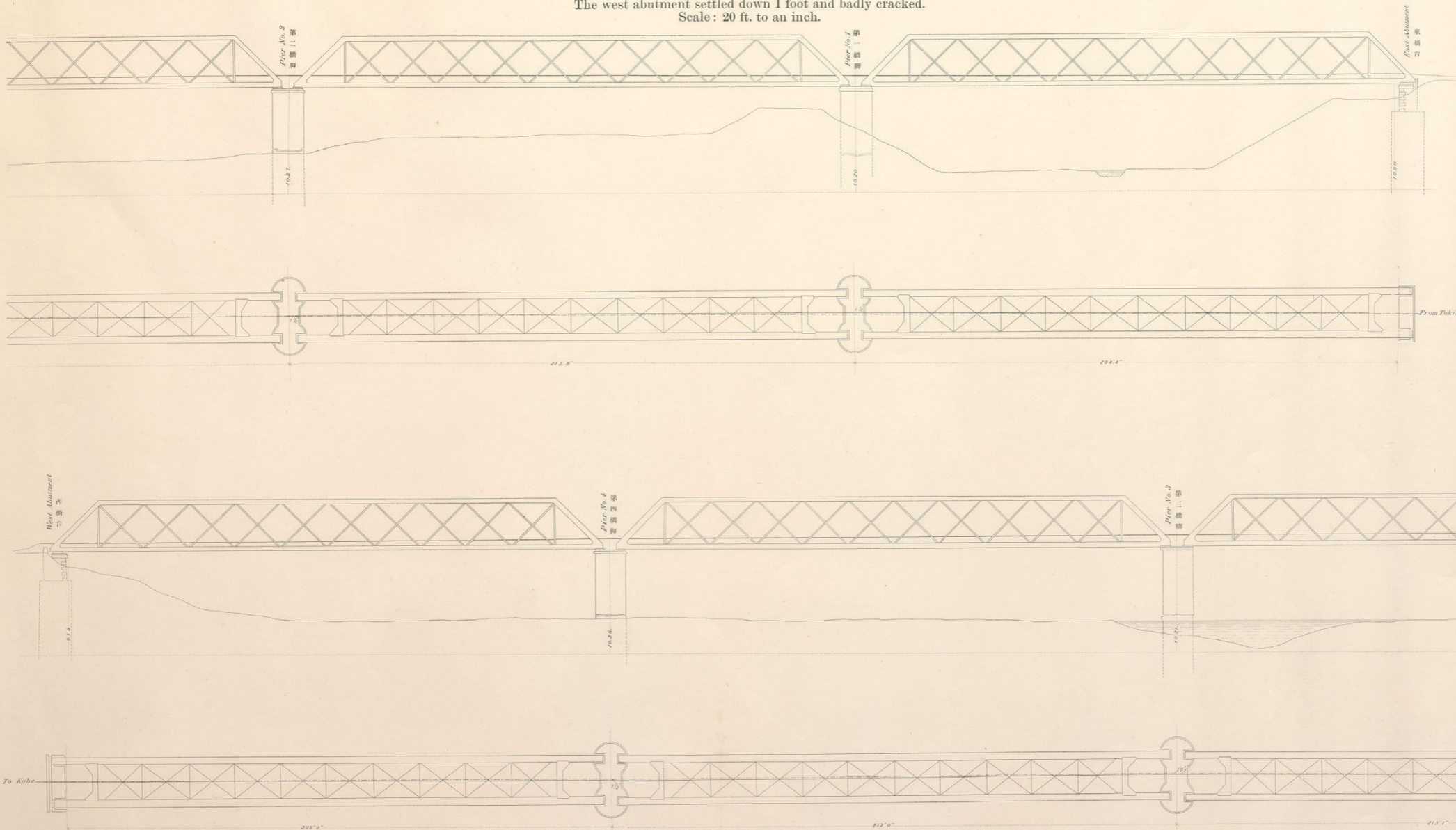


圖 害 震 橋 川 斐 捐
 ELEVATION AND PLAN
 OF
 IBIGAWA BRIDGE.

Showing the condition after the earthquake disaster of Oct. 28th, 1891.
 All the piers, each consisting of a pair of brick columns, 12' in diameter, broken a few feet above low water level and displaced a few inches in various directions.
 The west abutment settled down 1 foot and badly cracked.
 Scale: 20 ft. to an inch.



A 1 2 3 4 5 6 M 8 9 10 11 12 13 14 15 B 17 18 19

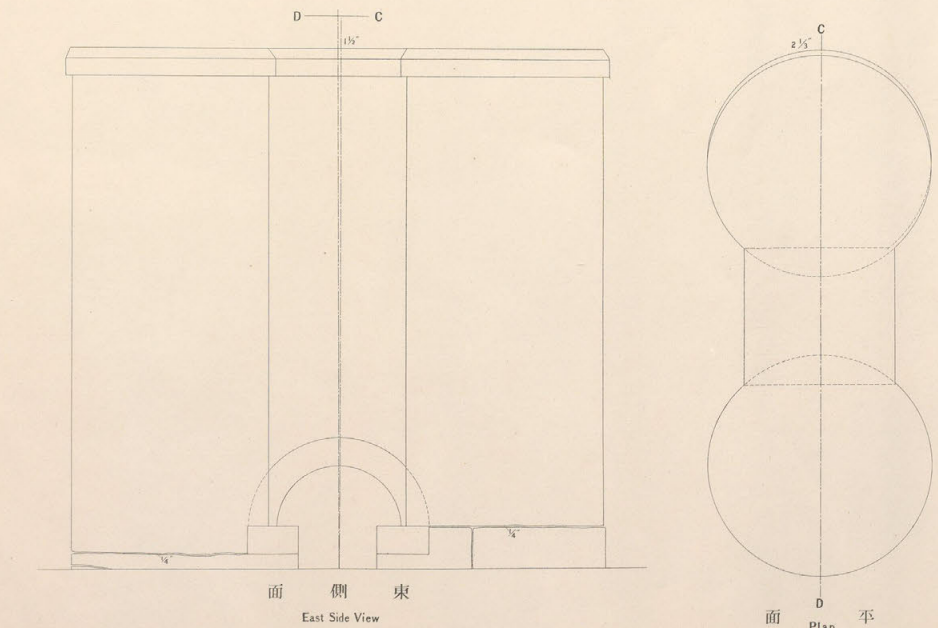
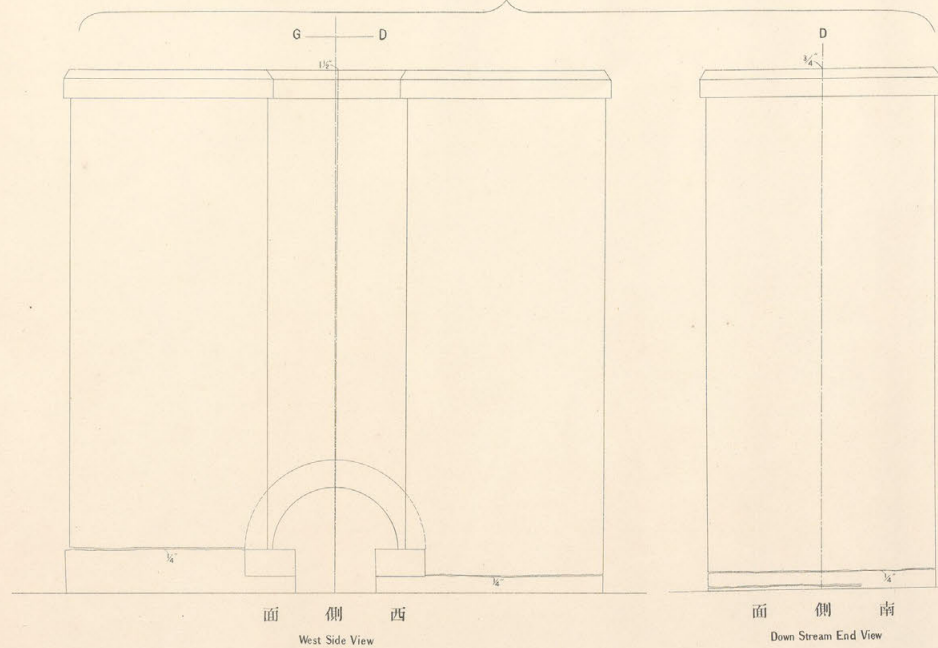
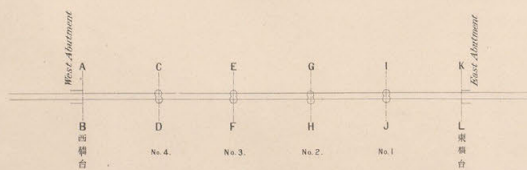
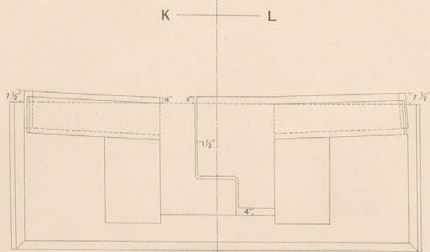
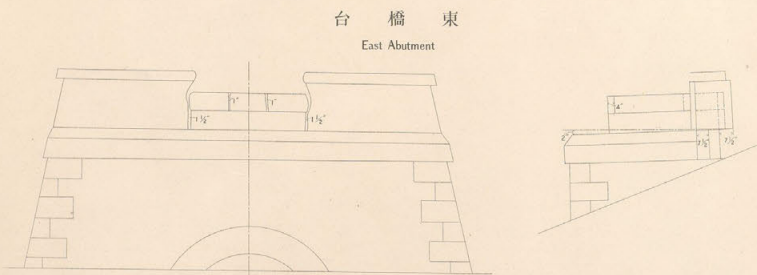
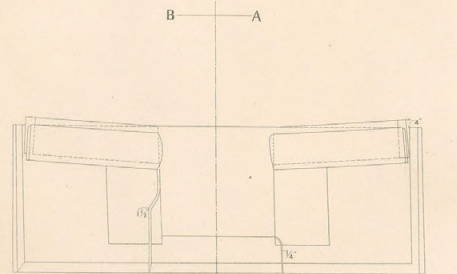
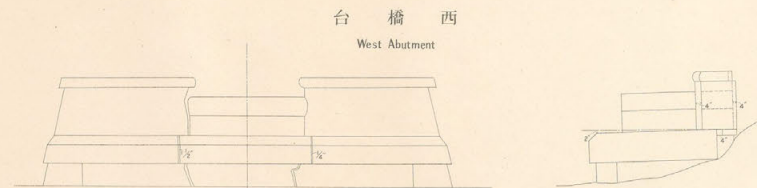
圖細明害震脚橋及臺 ELEVATION & PLAN OF OF IBIGAWA

伊比川橋台及橋脚震害明細圖(其一)

Showing the condition after the earth

Scale: 4 ft. to

Pier No. 4.
脚橋四第



捐斐川橋台及橋脚震害明細圖(其二)

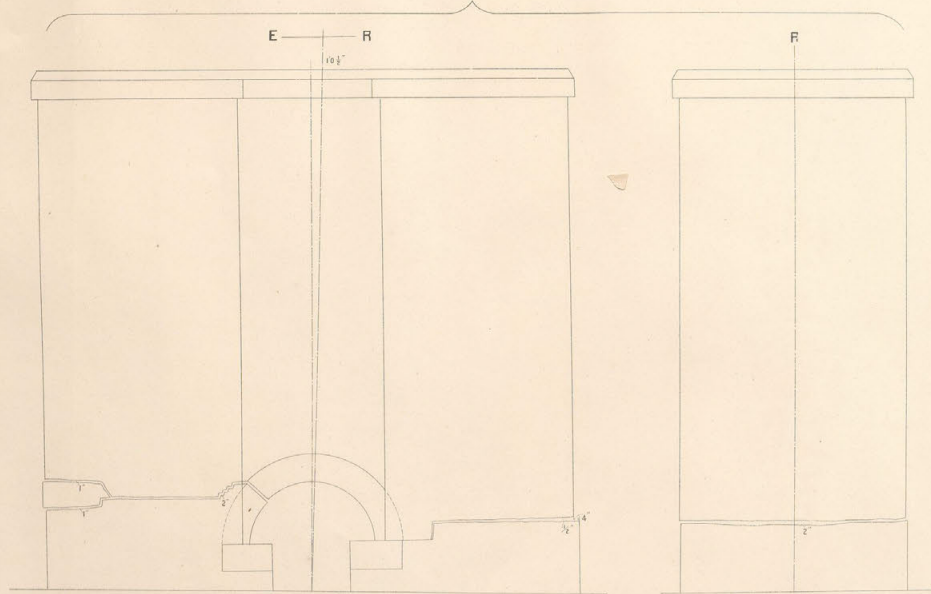
捐斐川橋 ABUTMENTS & PIERS

BRIDGE.

quake disaster of Oct. 23th, 1891.

an inch.

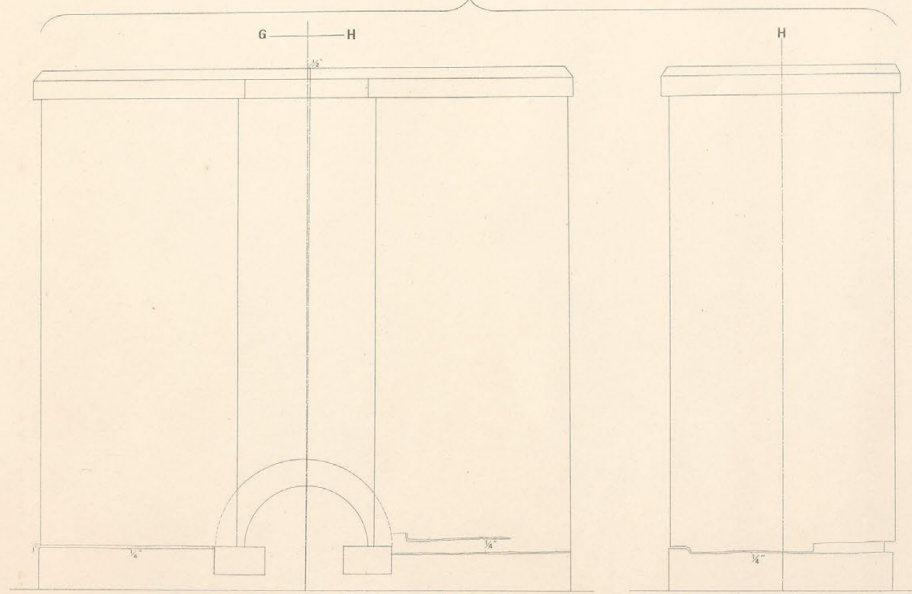
Pier No. 3.
脚橋三第



面側西
West Side View

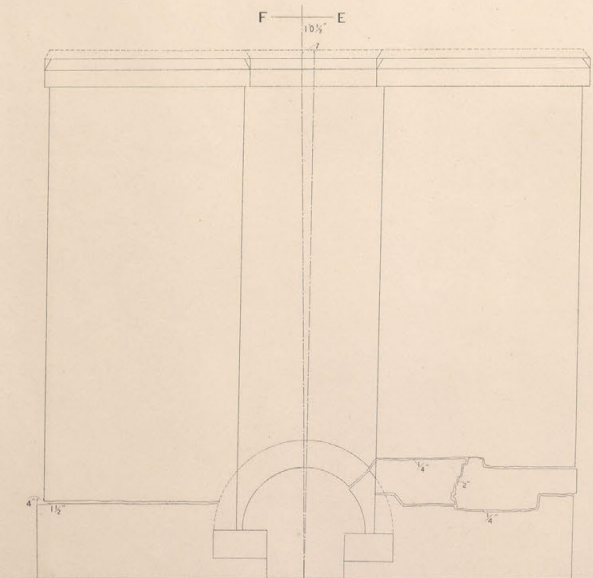
面側南
Down Stream End View

Pier No. 2.
脚橋二第

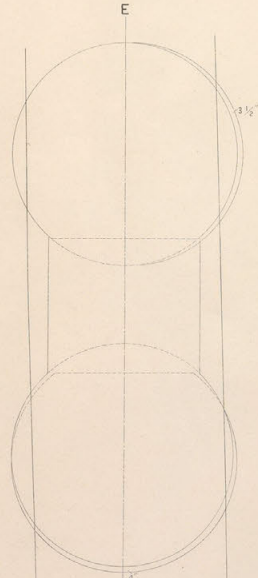


面側西
West Side View

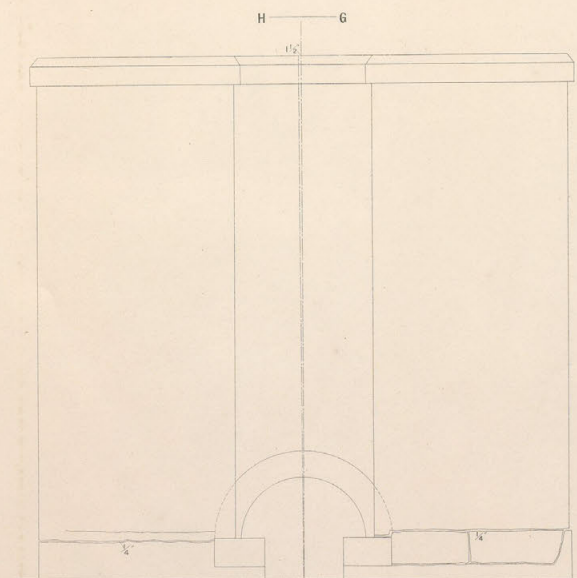
面側南
Down Stream End View



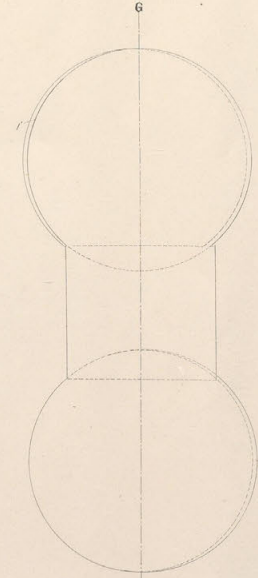
面側東
East Side View



面 F 平
Plan

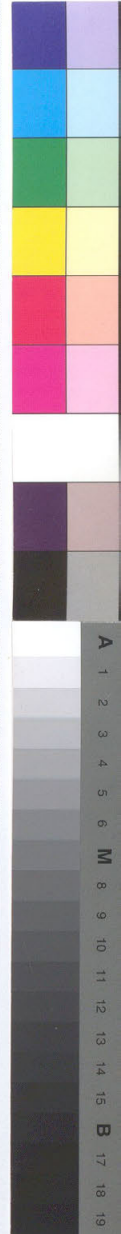


面側東
East Side View



面 H 平
Plan

20 1 2 3 4 5 6 7 8 9 50 1 2 3 4 5 6 7 8 9 60 1 2 3 4 5 6 7 8 9 70 1 2 3 4 5 6 7 8 9 80 1 2 3 4 5 6 7 8 9 90 1 2 3 4 5 6 7



A 1 2 3 4 5 6 M 8 9 10 11 12 13 14 15 B 17 18 19

ニノ町コルベルトル震害圖

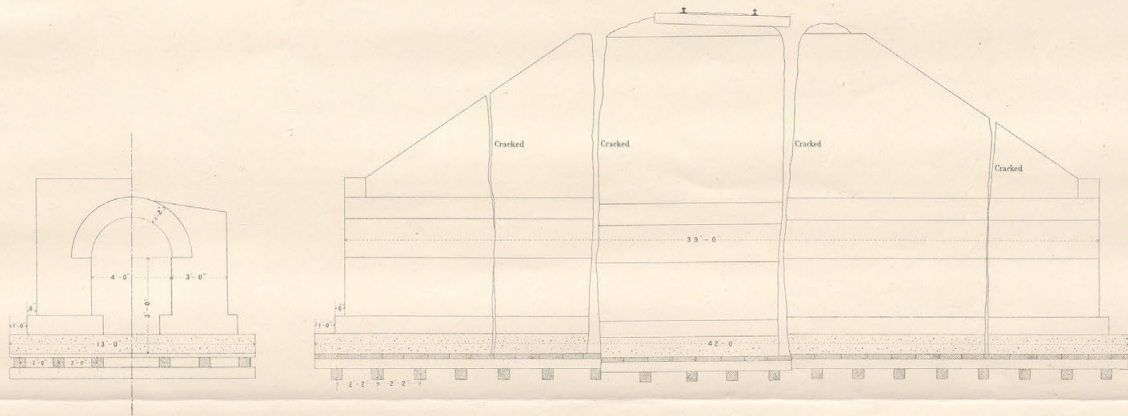
NINOMACHI CULVERT.

(258^M. 45^{CH}-34)

Showing the condition after the great earthquake disaster of Oct. 28th, 1891.

The embankment and the culvert cracked through as shown.

Scale: 4 ft. to an inch.



CROSS SECTION.

LONGITUDINAL SECTION.

