

# 震災豫防調査會報告第一號附圖(甲)

東海道鐵道線路大府大垣間平面圖	六枚 (自其一 至其六)
東海道枝線大府武豐間平面圖	貳枚 (其一)
木曾川橋震害圖	貳枚 (其二)
木曾川橋改造橋脚圖	壹枚
舊木曾川鐵橋橋臺及橋脚圖	壹枚
境川橋震害圖	貳枚 (其三)
境川橋橋臺及橋脚震害明細圖	貳枚 (其二)

# 東海道鐵道線路大府大垣間平面圖

## TOKAIDO RAILWAY

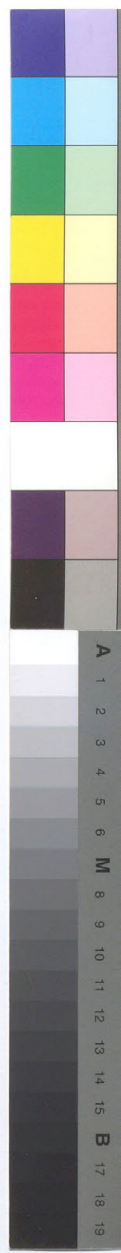
(ŌBU-ŌGAKI STATION).

Scale: 4 inches to 1 mile.

東海道鐵道線路大府大垣間平面圖(其一)



1 2 3 4 5 6 7 8 9 10 11 12 13 14 15 16 17 18 19 20 21 22 23 24 25 26 27 28 29 30 31 32 33 34 35 36 37 38 39 40





Tombakugawa Bridge (6-75 spans)  
All the piers broken also the feet  
above the foundations well and some  
of them displaced a few inches as  
shown in the detail drawing.

For 23 chains from 220° 25' to  
230° 25' embankment settled  
from 1 to 4 feet.

For 23 chains from 220° 25' to  
230° 25' embankment settled  
about 4 feet.

AIZUTA STATION.  
Station building entirely fell down.  
Station master's quarters partly fell down.  
Up platform settled down 7 or 8 feet.  
Other buildings damaged more or less.

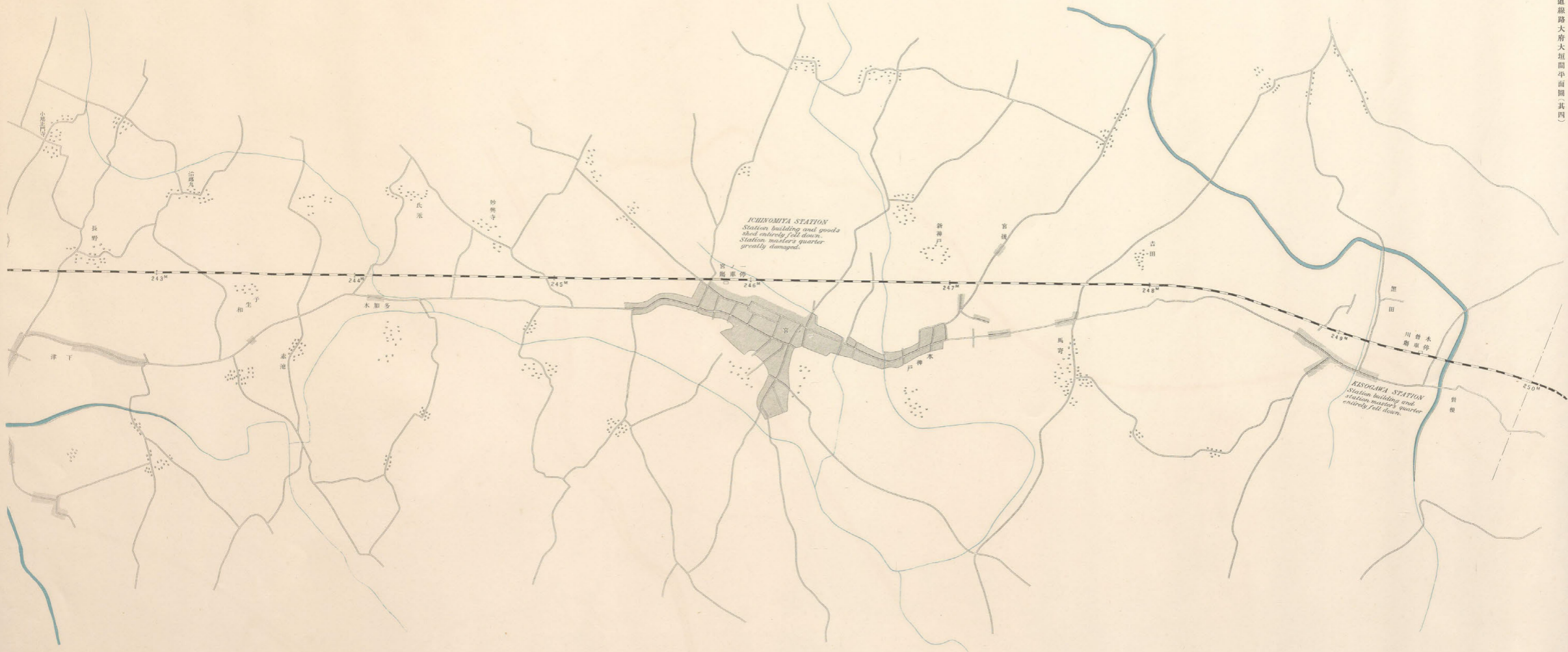


A 1 2 3 4 5 6 M 8 10 11 12 13 14 15 B 17 18 19



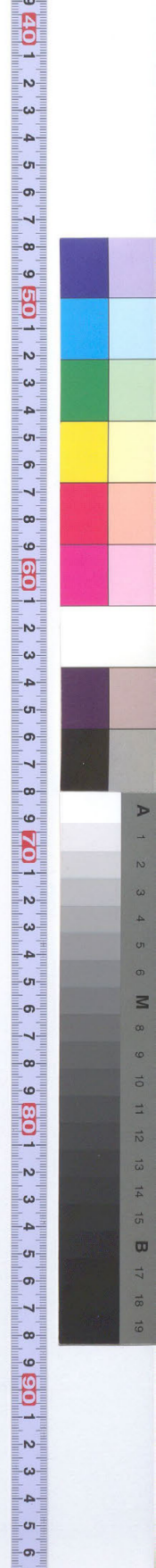
9 40 1 2 3 4 5 6 7 8 9 50 1 2 3 4 5 6 7 8 9 60 1 2 3 4 5 6 7 8 9 70 1 2 3 4 5 6 7 8 9 80 1 2 3 4 5 6 7 8 9 90 1 2 3 4 5 6







A 1 2 3 4 5 6 M 8 10 11 12 13 14 15 B 17 18 19



東海道支線大府武豐間平面圖

度 尺  
哩一為吋四以

TOKAIDO BRANCH RAILWAY

(ŌBU-TAKETOYO LINE).

Scale: 4 inches to 1 mile.

東海道支線大府武豐間平面圖 (其二)

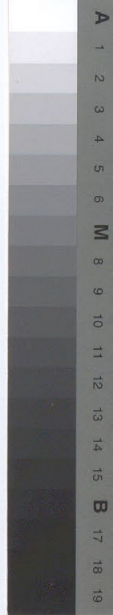
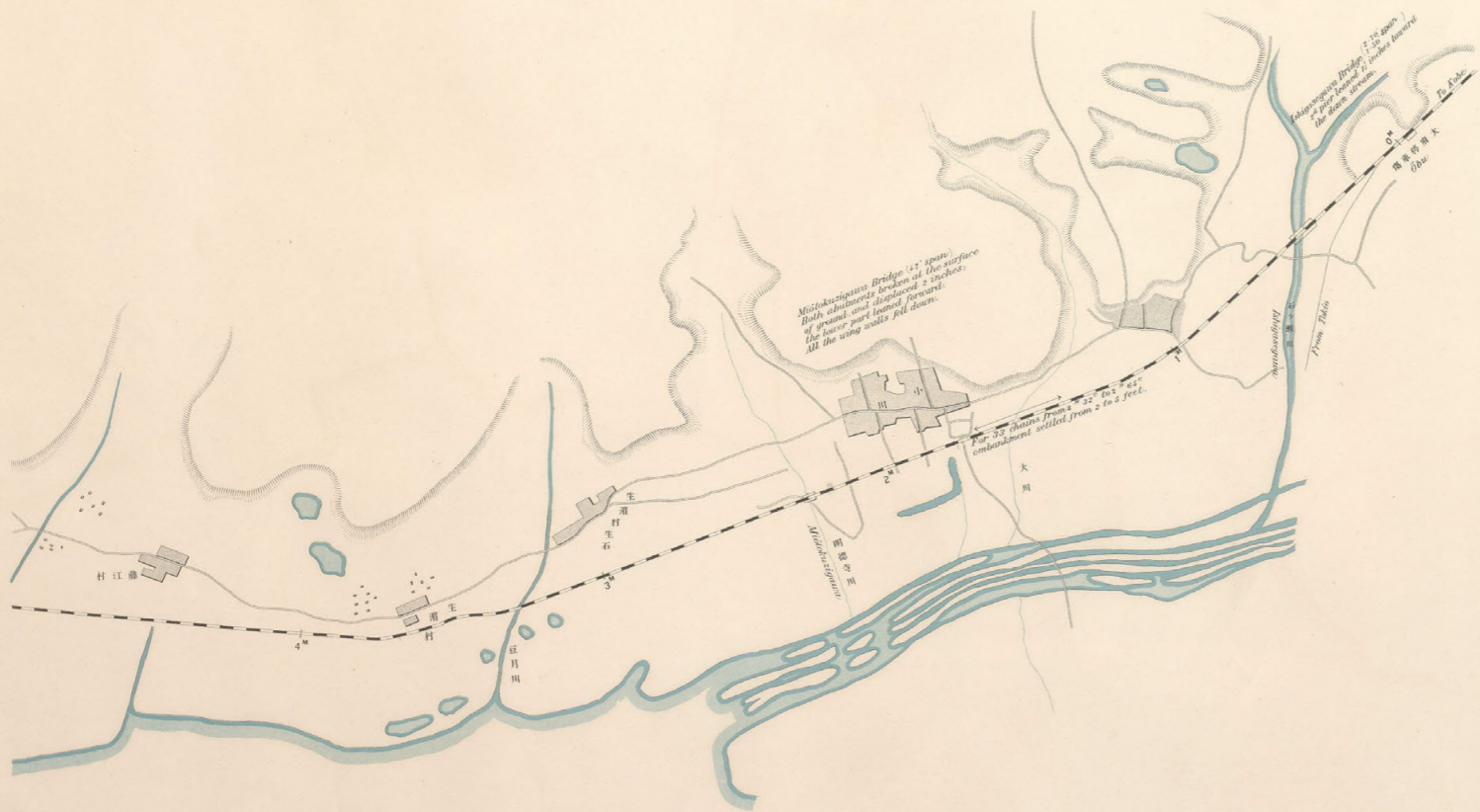


1 2 3 4 5 6 7 8 9 10 11 12 13 14 15 16 17 18 19 20



A 1 2 3 4 5 6 M 8 10 11 12 13 14 15 B 17 18 19





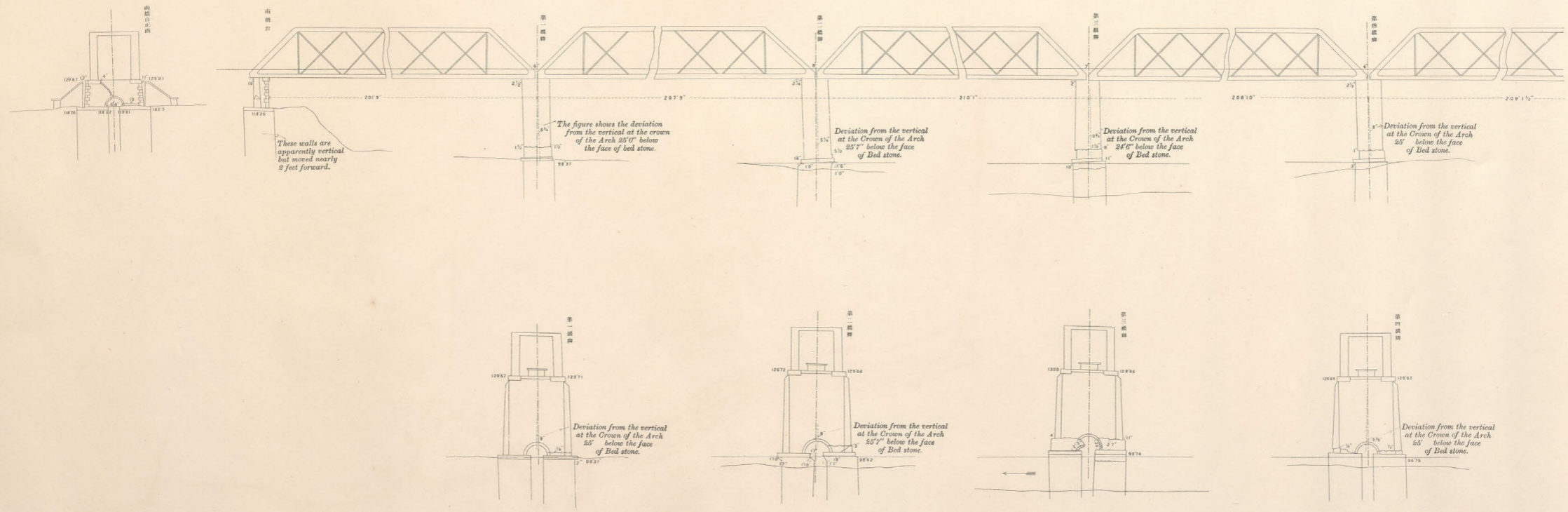
# 橋震害圖

度  
呎拾貳為

## SIDE AND FR OF KISOGAWA

Showing the condition after the earth  
All piers and abutments cracked at a few feet ab  
less displaced in var  
Scale: 20 ft. to

本會川橋震害圖(其一)



# 川曾木

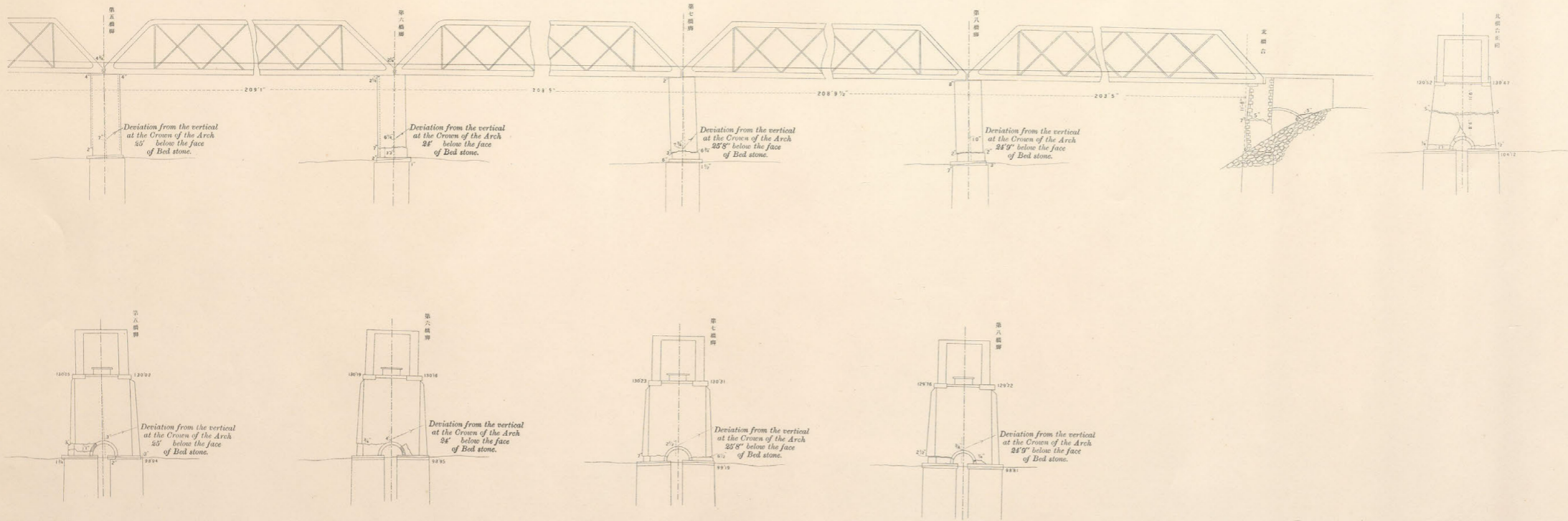
## 尺 吋壹以 ONT VIEW

### BRIDGE.

quake disaster of Oct. 28th, 1891.

ove the top of foundation wells and more or  
ious directions.

an inch.



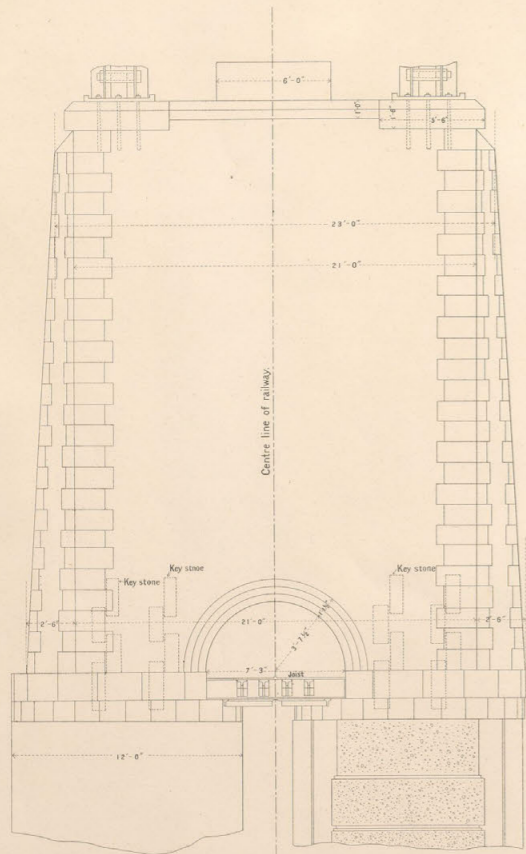
# 木曾川橋改造脚圖

尺以四吋爲一呎

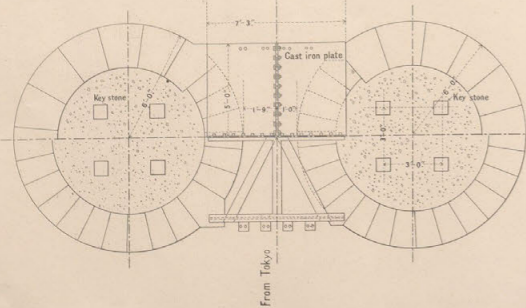
## PIERS OF KISOGAWA BRIDGE.

As reconstructed after the earthquake disaster, by filling up the space under joining arch with brick work, supported by cast iron plate or by light sectional brick arch and using several keystones, built in near the bottom of piers in view to resist horizontal thrust.

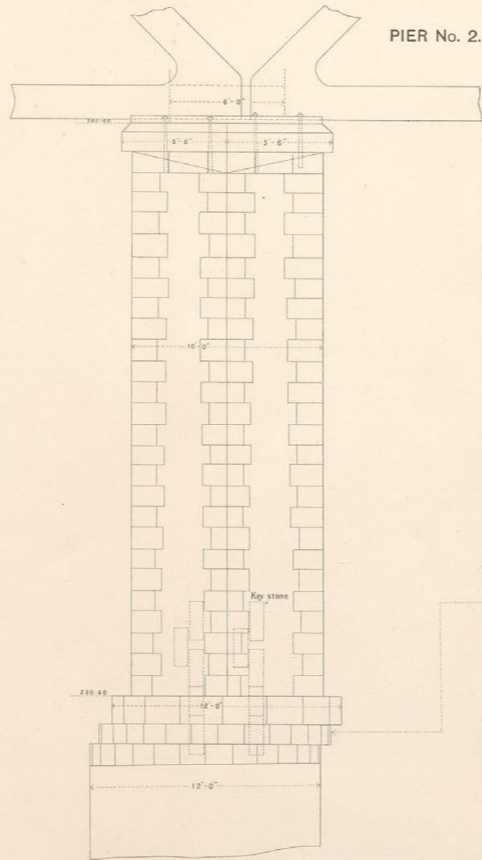
FACE.



PLAN. No. 1.



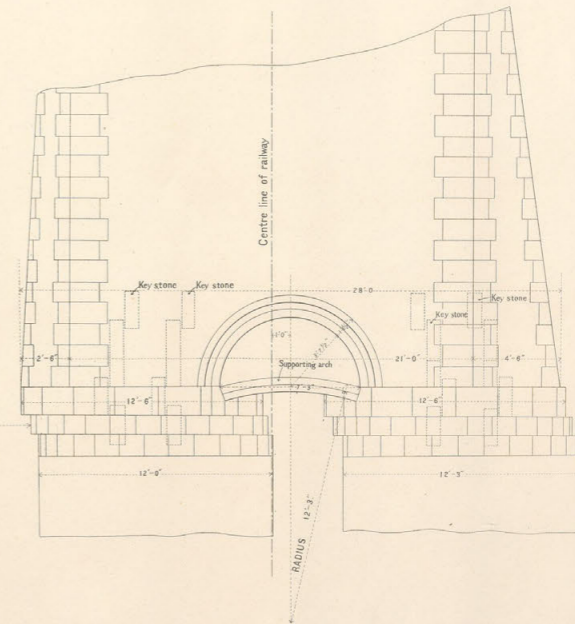
UP STREAM VIEW



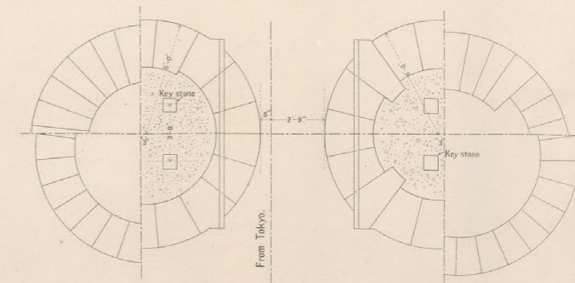
PIER No. 2.

Scale: 4 feet to an inch.

FACE.



PLAN. CAP STONE.



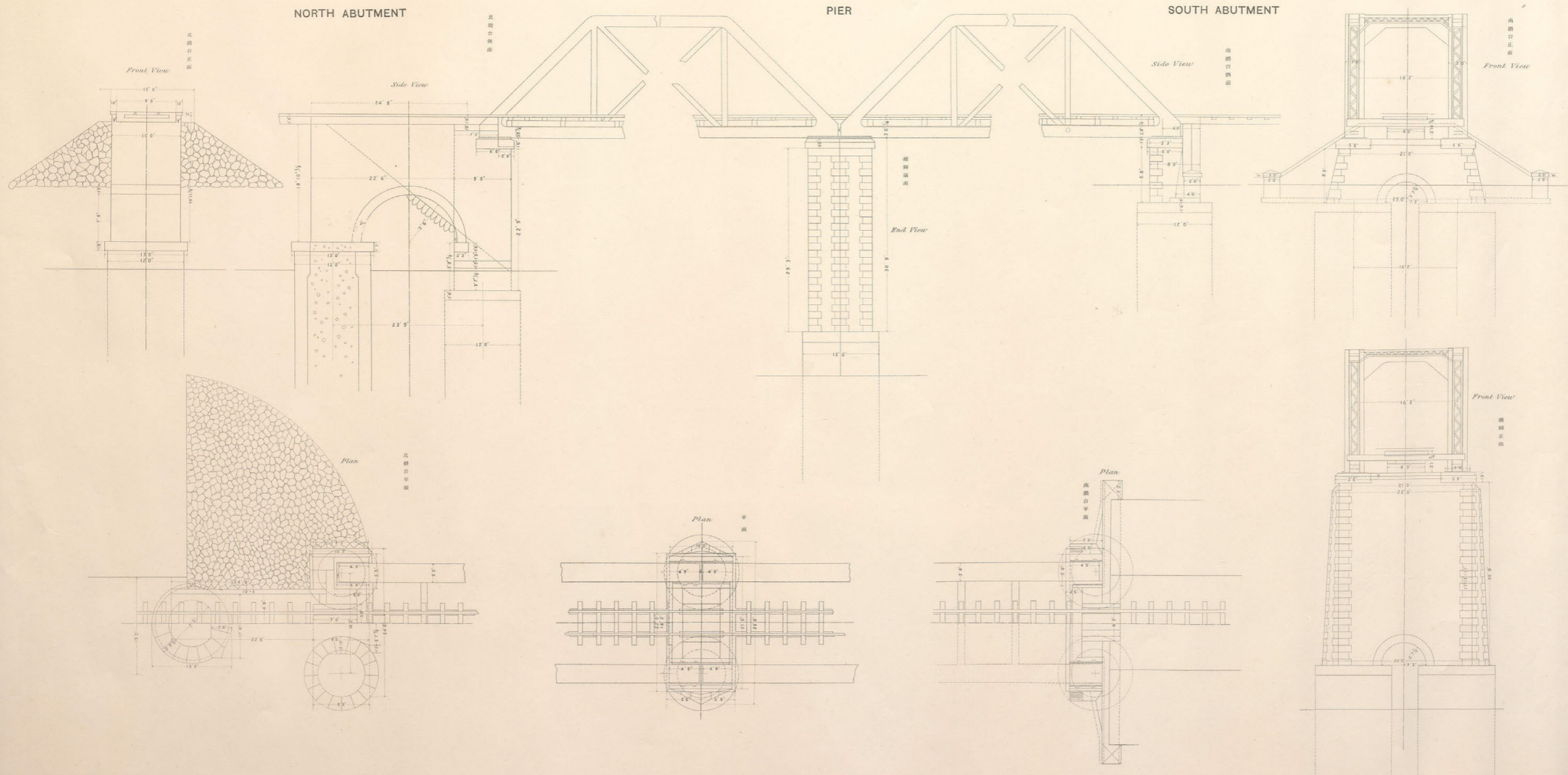
Foundation north of No. 2 pier has been shown out of their proper position by foot, while in construction work resulted in producing this irregularity, so that displacement is not due to the effect of earthquake.

# 圖脚橋及臺橋橋鐵川曾木舊

度 尺  
呎八為吋壹以

Scale 8 ft. = 1 inch.

## ORIGINAL DRAWING OF ABUTMENTS AND PIERS OF KISOGAWA BRIDGE



9 4 0 1 2 3 4 5 6 7 8 9 5 0 1 2 3 4 5 6 7 8 9 6 0 1 2 3 4 5 6 7 8 9 7 0 1 2 3 4 5 6 7 8 9 8 0 1 2 3 4 5 6 7 8 9 9 0 1 2 3 4 5 6



A 1 2 3 4 5 6 M 8 9 10 11 12 13 14 15 B 17 18 19

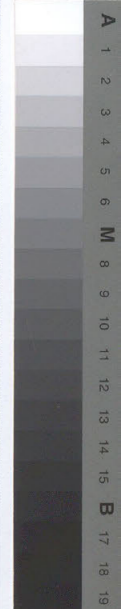
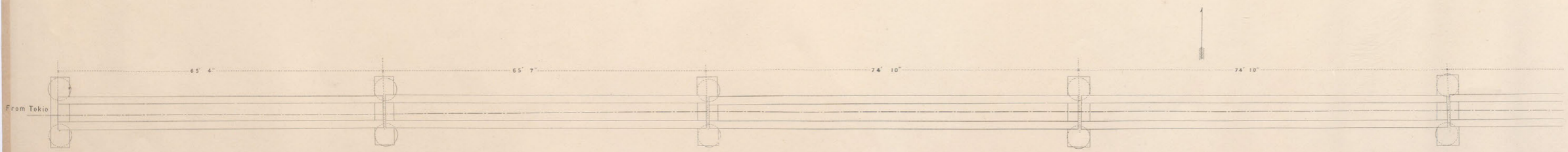
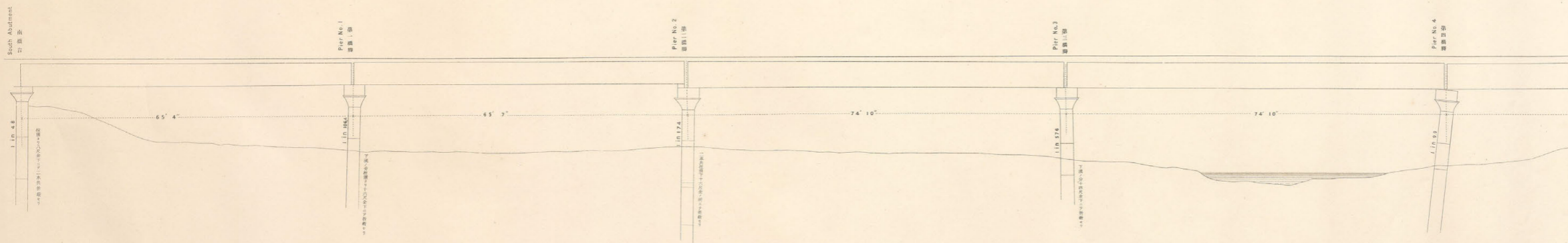
# 境川橋震害圖

## ELEVATION & PLAN OF SAKAIGAWA

Showing the condition after the earthquake disaster of Oct. 28th,  
All the piers, each consisting of a couple of cast iron screw piles, 2'6" in diameter and filled with concrete, broken

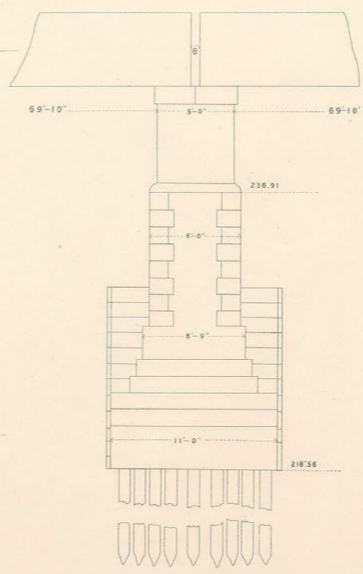
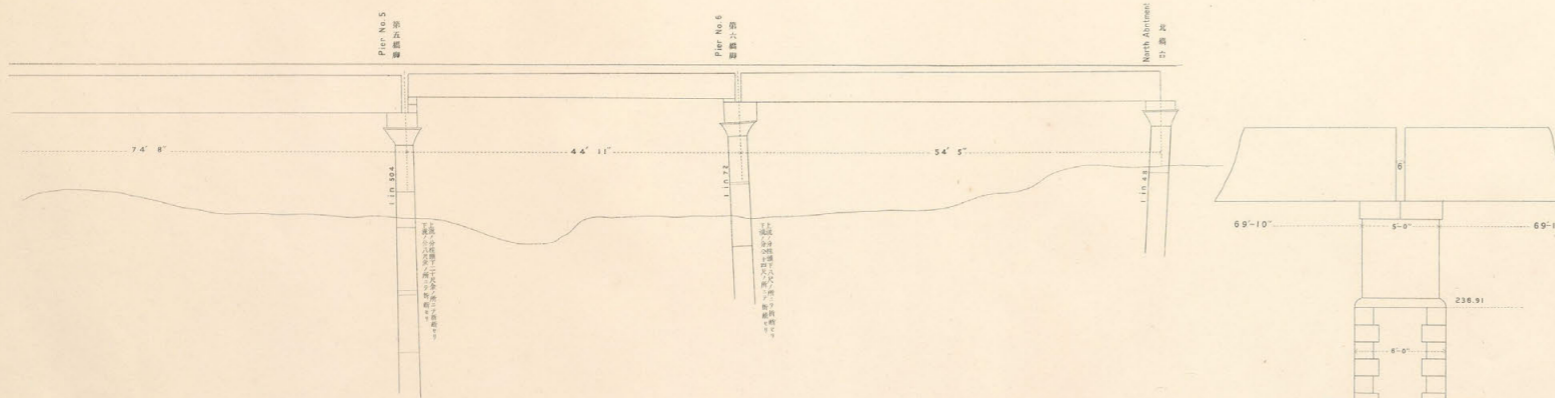
Scale 10 ft. = 1 inch.

境川橋震害圖(其一)



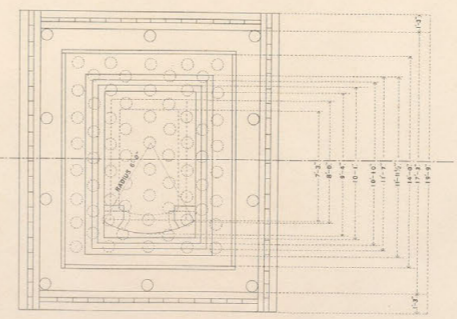
# BRIDGE.

1891.  
near the surface or underneath the ground.



## PLAN & ELEVATION OF PIER No. 3.

As reconstructed after the earthquake disaster of  
Oct. 28th, 1891.



Scale: 5 ft. to an inch.



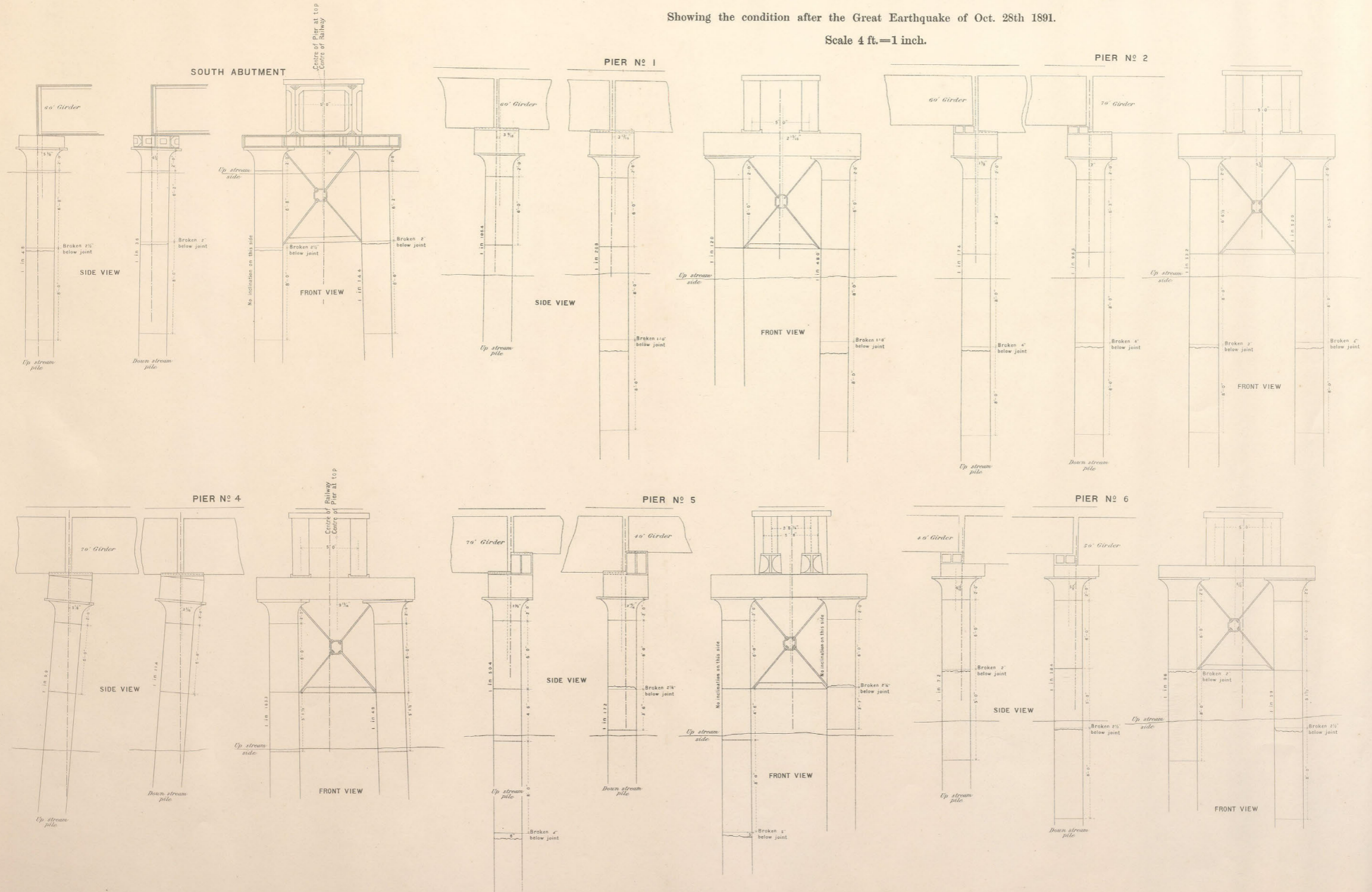
# 圖細明害震脚橋及臺橋橋川境

## DETAIL OF PIERS & ABUTMENTS OF SAKAIGAWA BRIDGE

Showing the condition after the Great Earthquake of Oct. 28th 1891.

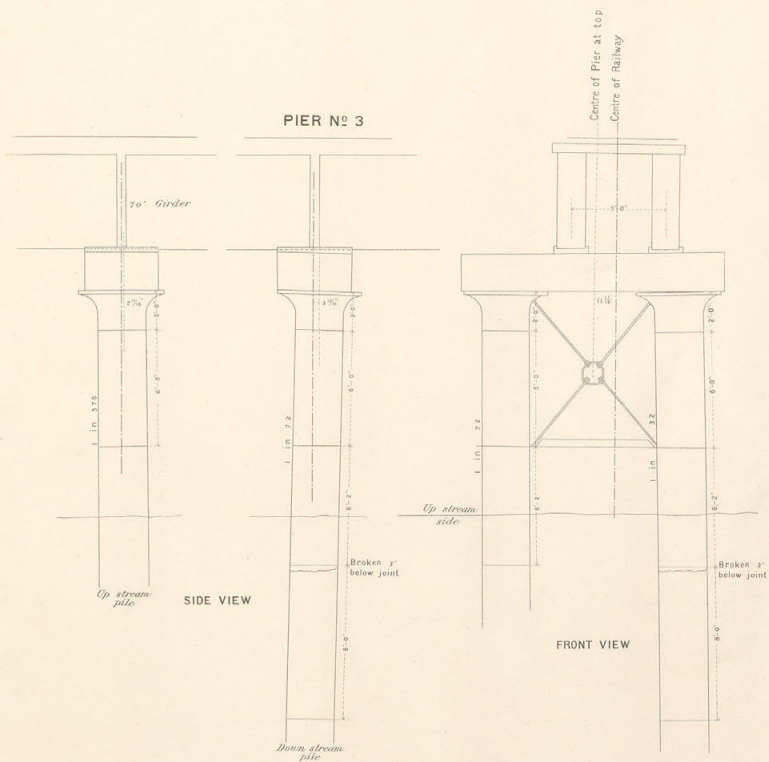
Scale 4 ft.=1 inch.

境川橋橋臺及橋脚震害明細圖(其一)





PIER N° 3



NORTH ABUTMENT

